



ROSEBUD LAKE WILDLIFE REFUGE (A REGIONAL PARK PLAN) MAY 9, 2002



OBJECTIVES AND POLICIES

OBJECTIVE #1 - TO IDENTIFY A VISION FOR THE DEVELOPMENT OF A REGIONAL PARK TO BE ESTABLISHED AS A WILDLIFE REFUGE AT ROSEBUD LAKE.


POLICIES TOWARDS MEETING OBJECTIVE #1:

- 1.0 MEET WITH THE PUBLIC AND ADVISORY STEERING COMMITTEE TO FINALIZE A SUITABLE DEVELOPMENT PLAN BASED ON THE APPROVED TERMS OF REFERENCE.
- 2.0 PREPARE A MAP THAT REFLECTS THE SHORT-TERM (5 YEAR) VISION FOR THE DEVELOPMENT OF A PARK THAT RESPECTS WILDLIFE PRESERVATION AT ROSEBUD LAKE. THE MAP REFLECTS THE DEVELOPMENT PLAN FOR ROSEBUD LAKE WILDLIFE REFUGE, AND INCLUDES THE FOLLOWING KEY COMPONENTS:
 - 2.1) DEVELOPMENT OF A SMALL PARKING LOT ON THE NORTHERN PORTION OF LOT 1, PLAN NEP62347, D.L. 9764
 - 2.2) DEVELOPMENT OF A LOW MAINTENANCE PIT TOILET FACILITY ON THE NORTHERN PORTION OF LOT 1, PLAN NEP62347, D.L. 9764.
 - 2.3) DEVELOPMENT OF A TRAIL SYSTEM THROUGH THE AREA AS SHOWN.
 - 2.4) DEVELOPMENT OF PICNICKING FACILITIES AS SHOWN.
 - 2.5) DEVELOPMENT OF WILDLIFE-PROOF GARBAGE COLLECTION FACILITIES AS SHOWN.
 - 2.6) DEVELOPMENT OF A WELL FOR POTABLE WATER AT A SUITABLE LOCATION NEAR THE PARKING LOT.

OBJECTIVE #2 - TO ACQUIRE ADDITIONAL LANDS IN ORDER TO PROVIDE FOR A CONTIGUOUS LAND BASE FOR THE ROSEBUD LAKE WILDLIFE REFUGE.

POLICIES TOWARDS MEETING OBJECTIVE #2:

- 1.0 APPLICATION TO BRITISH COLUMBIA ASSETS AND LAND CORPORATION FOR THE ACQUISITION OF APPROXIMATELY SIX (6) HECTARES OF CROWN LAND, D.L. 10393, FOR INCLUSION INTO THE ROSEBUD LAKE WILDLIFE REFUGE, AS SHOWN ON THE MAP.
- 2.0 TO OBTAIN TENURE OF THE EXISTING BEACH ADJACENT TO THE ROAD IN ORDER TO ENHANCE THE BEACH AND ENSURE WATER ACCESS IS MINIMIZED THROUGH THE REMAINDER OF THE REFUGE.

 REGIONAL DISTRICT OF CENTRAL KOOTENAY
Planning Department
Box 590, 202 Lakeside Drive, Nelson, BC V1L5R4
Phone: (250)352-6665 Fax: (250)352-9300
Toll - Free in BC: 1-800-268-7325
Email: rdck@rdck.bc.ca Internet: http://www.rdck.bc.ca
Plot File: p:\arcview\projects\rosebud\rosebud.apr
Plot Date: May 9, 2002



INTRODUCTION

THE REGIONAL DISTRICT OF CENTRAL KOOTENAY ADOPTED THE OFFICIAL REGIONAL PARK PLAN BYLAW NO. 528, 1986 THAT LAID OUT A DIRECTION FOR REGIONAL PARKS AND THEIR SUBSEQUENT DEVELOPMENT WITHIN THE REGIONAL DISTRICT. THE BASIS FOR THE REGIONAL PARK PLAN BYLAW INCLUDES PARK DEVELOPMENT ON A SUBREGIONAL BASIS. SUBSEQUENT AMENDMENTS IN 1997 TO THE OFFICIAL REGIONAL PARK PLAN (BYLAW 1239) HAVE INCLUDED A REGIONAL PARK AT ROSEBUD LAKE TO BE DEVELOPED AS A LOW INTENSITY DEVELOPMENT LAKESHORE PARK.

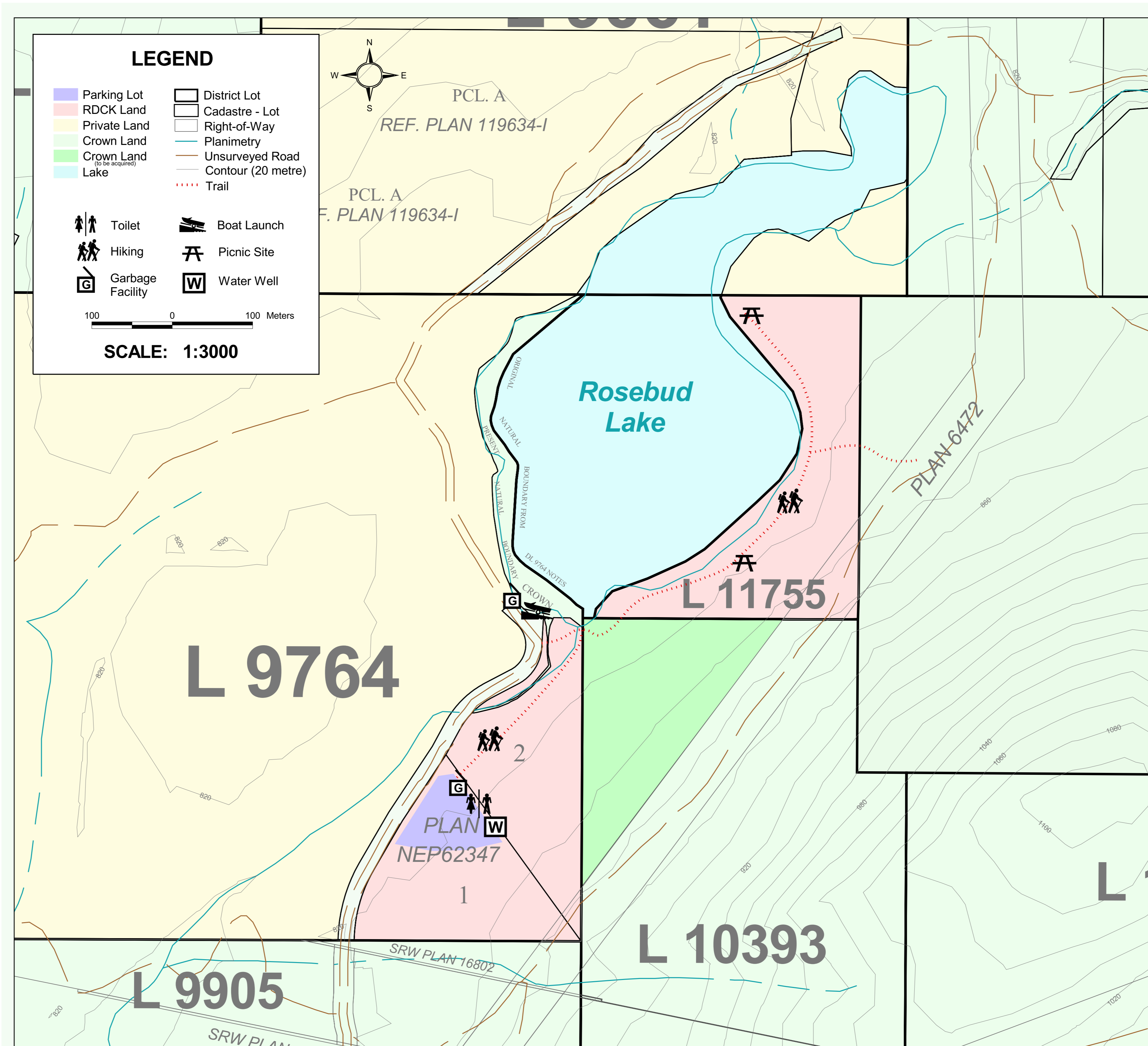
THE REGIONAL DISTRICT OF CENTRAL KOOTENAY SUBSEQUENTLY OBTAINED THREE PARCELS OF LAND IN THE ROSEBUD LAKE AREA FOR REGIONAL PARK PURPOSES. THIS LAND IS LOCATED OFF HIGHWAY #6 AND NEAR THE U.S. BORDER IN ELECTORAL AREA G OF THE REGIONAL DISTRICT OF CENTRAL KOOTENAY. THE THREE PARCELS OF LAND ARE APPROXIMATELY THIRTEEN (13) HECTARES IN AREA AND ARE LEGALLY DEFINED AS LOTS 1 & 2, PLAN NEP62347, D.L. 9764 AND D.L. 11755.

PLANNING PROCESS

IN APRIL 2001, THE REGIONAL BOARD, BY RESOLUTION, ADOPTED A TERMS OF REFERENCE THAT IDENTIFIED THE PROCESS TOWARDS THE COMPLETION OF A PARK PLAN FOR ROSEBUD LAKE. THE TERMS OF REFERENCE IDENTIFIED A NUMBER OF OBJECTIVES THAT WERE TO BE LOOKED AT IN REFERENCE TO THE DEVELOPMENT OF A REGIONAL PARK AT ROSEBUD LAKE. FROM A PUBLIC MEETING HELD ON MAY 7, 2001, THE GOAL AND SUBSEQUENT OBJECTIVES WERE PREPARED AS A PRIORITY FOR THE DEVELOPMENT OF A WILDLIFE REFUGE AT ROSEBUD LAKE.

GOAL

TO DEVELOP A REGIONAL PARK PURSUANT TO THE REGIONAL PARK ACT THAT PROVIDES FOR THE REFUGE OF WILDLIFE AND FOR LOW INTENSITY LAKESHORE USE BY RESIDENTS OF THE NELSON - SALMO, E, F AND G SUBREGION OF THE REGIONAL DISTRICT OF CENTRAL KOOTENAY



OBJECTIVE #3 - TO APPOINT A ROSEBUD LAKE WILDLIFE REFUGE COMMISSION THAT SHALL BE RESPONSIBLE FOR MANAGING THE PARK AND SEEK FUNDING OPTIONS FOR MAINTENANCE AND DEVELOPMENT.

POLICIES TOWARDS MEETING OBJECTIVE #3:

- 1.0 THE REGIONAL DISTRICT BOARD SHALL APPOINT A COMMISSION TO MANAGE ROSEBUD LAKE WILDLIFE REFUGE.
- 2.0 THE REGIONAL DISTRICT, THROUGH THE ROSEBUD LAKE WILDLIFE REFUGE COMMISSION, SHALL SEEK FUNDING AND VARIOUS LABOUR OPTIONS FOR THE FUTURE DEVELOPMENT OF ROSEBUD LAKE. THESE OPTIONS MAY INCLUDE, BUT SHALL NOT BE LIMITED TO THE FOLLOWING:
 - 1.1) APPLICATION TO VARIOUS GOVERNMENT AGENCIES FOR FUNDING.
 - 1.2) VOLUNTEER BY THE PUBLIC OF LABOUR AND/OR EQUIPMENT.
 - 1.3) DONATIONS BY VARIOUS SECTORS FOR MATERIALS.
 - 1.4) USER FEES MAY BE CONSIDERED IF ANY CAMPING FACILITIES WERE TO BE DEVELOPED IN THE FUTURE.
 - 1.5) ESTABLISHMENT OF A ROSEBUD LAKE RESERVE FUND THAT COULD BE UTILIZED FOR CAPITAL DEVELOPMENTS.

OBJECTIVE #4 - TO ACQUIRE THE WATER LICENSE THAT CURRENTLY EXISTS FOR THE DAM THAT REGULATES WATER LEVELS ON ROSEBUD LAKE.

POLICIES TOWARDS MEETING OBJECTIVE #4:

- 1.0 THE REGIONAL DISTRICT SHALL CONTINUE TO PURSUE THE ACQUISITION OF THE WATER LICENSE FOR THE DAM IN ORDER TO ENSURE THE MAINTENANCE OF WATER LEVELS ON ROSEBUD LAKE.
- 2.0 THE REGIONAL DISTRICT, UPON RECEIPT OF THE WATER LICENSE FOR THE DAM, SHALL PREPARE A DAM MAINTENANCE PROTOCOL THAT MEETS ALL REQUIREMENTS OF THE DAM INSPECTOR OF THE MINISTRY OF WATER, LAND AND AIR PROTECTION.
- 3.0 UPON COMPLETION OF THE DAM MAINTENANCE PROTOCOL, THE ROSEBUD LAKE WILDLIFE REFUGE COMMISSION SHALL BE CHARGED WITH THE ONGOING MAINTENANCE OF THE DAM.

OBJECTIVE #5 - TO MAXIMIZE THE MAINTENANCE OF THE ROSEBUD LAKE WILDLIFE REFUGE SHORELINE IN A NATURAL STATE TO ENSURE THE SUSTAINABILITY OF THE NATURAL ECOSYSTEM, WHILE ALLOWING LIMITED OPPORTUNITIES FOR WILDLIFE OBSERVATION.

POLICIES TOWARDS MEETING OBJECTIVE #5:

- 1.0 NO FORMAL LAKESHORE DEVELOPMENT FOR BEACHES OR BOAT LAUNCHES ARE TO BE CONSIDERED IN THE SHORT-TERM, OTHER THAN THAT IDENTIFIED IN OBJECTIVE #2.
- 2.0 ACCESS TO THE LAKE SHALL PREDOMINANTLY BE FROM THE ROAD ACCESS AT THE SOUTHERN BOUNDARY OF THE LAKE.
- 3.0 TRAIL DEVELOPMENT AND VIEWPOINTS SHALL OCCUR AT APPROPRIATE LOCATIONS TO ALLOW OBSERVATION OF BOTH AQUATIC LIFE AND OTHER WILDLIFE.

