

**Regional District of Central Kootenay
Electoral Area E**

**Morning Mountain
Purpose and Operations Statement**





TABLE OF CONTENTS

INTRODUCTION	4
FACILITY PURPOSE	5
COMMUNITY SIGNIFICANCE	8
NATURAL FEATURES.....	8
RECREATIONAL FEATURES.....	8
LOCAL & HERITAGE FEATURES.....	8
FIRST NATIONS.....	9
ZONING	10
OPERATIONS AND GOVERNANCE	11
FACILITIES AND ACTIVITIES	12
MANAGEMENT PRIORITIES	13
PROJECTED COST ANALYSIS	14
CONSULTATION AND FUTURE PLANNING	15
APPENDIX 1: REGIONAL PARK ZONING	16

MORNING MOUNTAIN PURPOSE AND OPERATIONS STATEMENT

Introduction

This Purpose and Operations Statement (POS) will guide the management of Morning Mountain into the foreseeable future.

Morning Mountain is located in the rural community of Blewett, approximately 4km west of the City of Nelson, via Blewett Road (see Map 1). The facility is accessed via Blewett Ski Hill Road which is a gravel road that switchbacks for 1km to the parking area.

It is important to note that Morning Mountain is not an RDCK Regional Park until it is recommended by the Nelson, Salmo, and Electoral Areas E, F, & G Regional Parks Commission, and resolved by the RDCK Board to establish it as such. The Parks Commission may consider inclusion of Morning Mountain as a Multiple Purpose Park in the RDCK Official Regional Parks Plan.

Legal Description: That part of the most westerly 1,800 feet of District Lot 11744, Kootenay District, lying to the North of the powerline right-of-way defined on Plan R/W 50, containing 20.6 hectares, more or less.

Morning Mountain is owned by the Province of BC and is operated as a public recreational facility through a Licence of Occupation (LoO). The LoO was signed on July 29, 2009 by both the Province of BC and the RDCK.

The facility has minimal development, and is used primarily by local residents. The purpose of the facility is to foster the existing year round public recreational activities. It is well used by local cyclists, and is the staging area for the yearly Fat Tire festival mountain bike event.

Prior to its use as a public recreation area, it was operated as a small local ski hill. The ski hill began operations in 1974 with the installation of a small T-bar lift. The Blewett Recreation Society successfully operated the lift until the lack of snow and deteriorating financial position led to its closure after the 1996/7 ski season. In 1999 the lodge was completely destroyed by fire. Given the changing climate and volunteer fatigue, the community made the decision to accept the insurance payout for the facility, not rebuild the ski lodge and to cease operations of the hill.

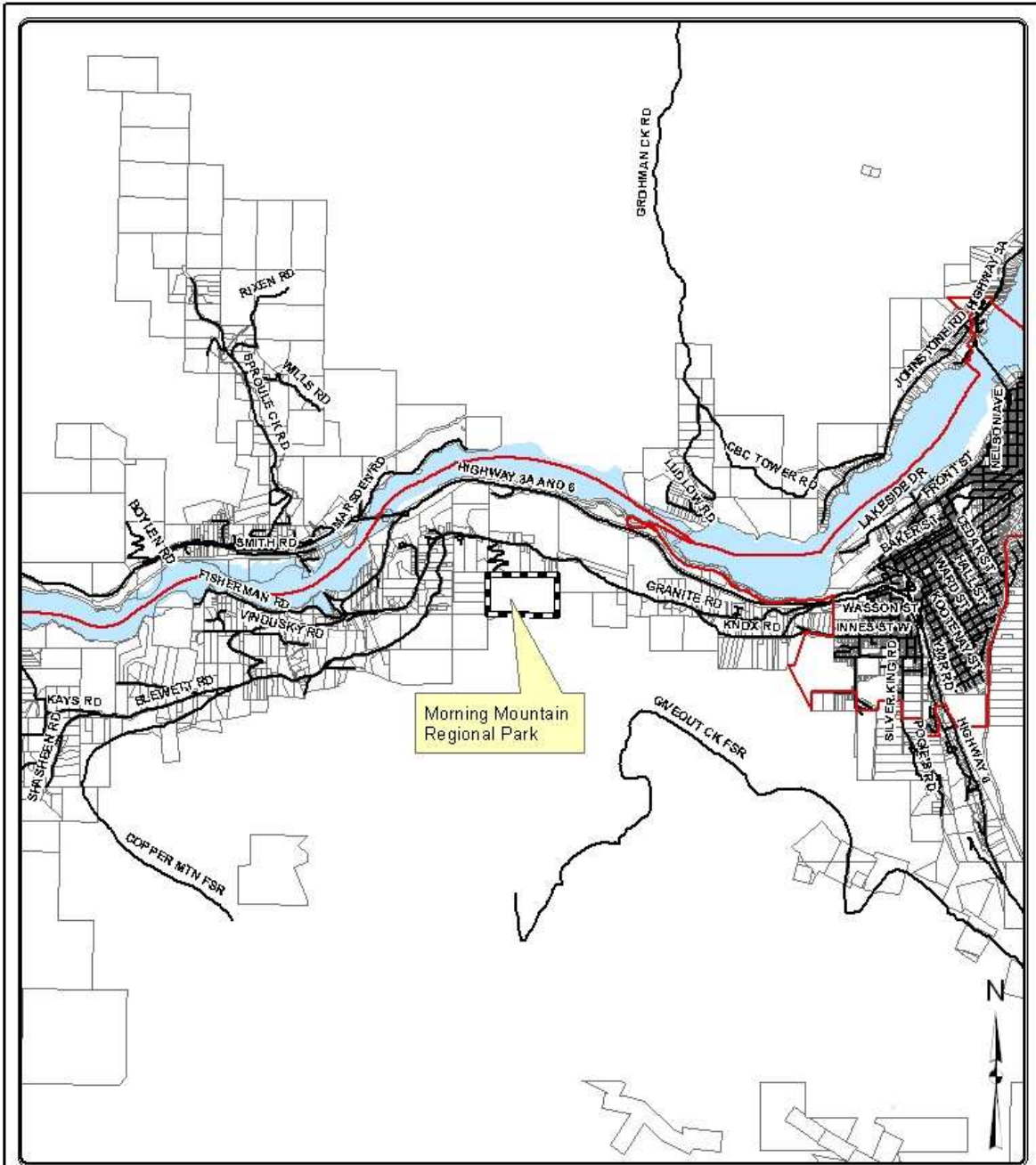
This POS provides the direction for the priority management and development of Morning Mountain. Implementation of this POS is of an operational nature, with follow-through on an as-needed basis and dependent on the availability of financial and staffing capacity.


Facility Purpose

Morning Mountain is primarily used by local residents for day-use public recreation opportunities, including cycling, hiking, nature appreciation, snowshoeing, and tobogganing.

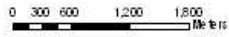


Map 1: Facility Location

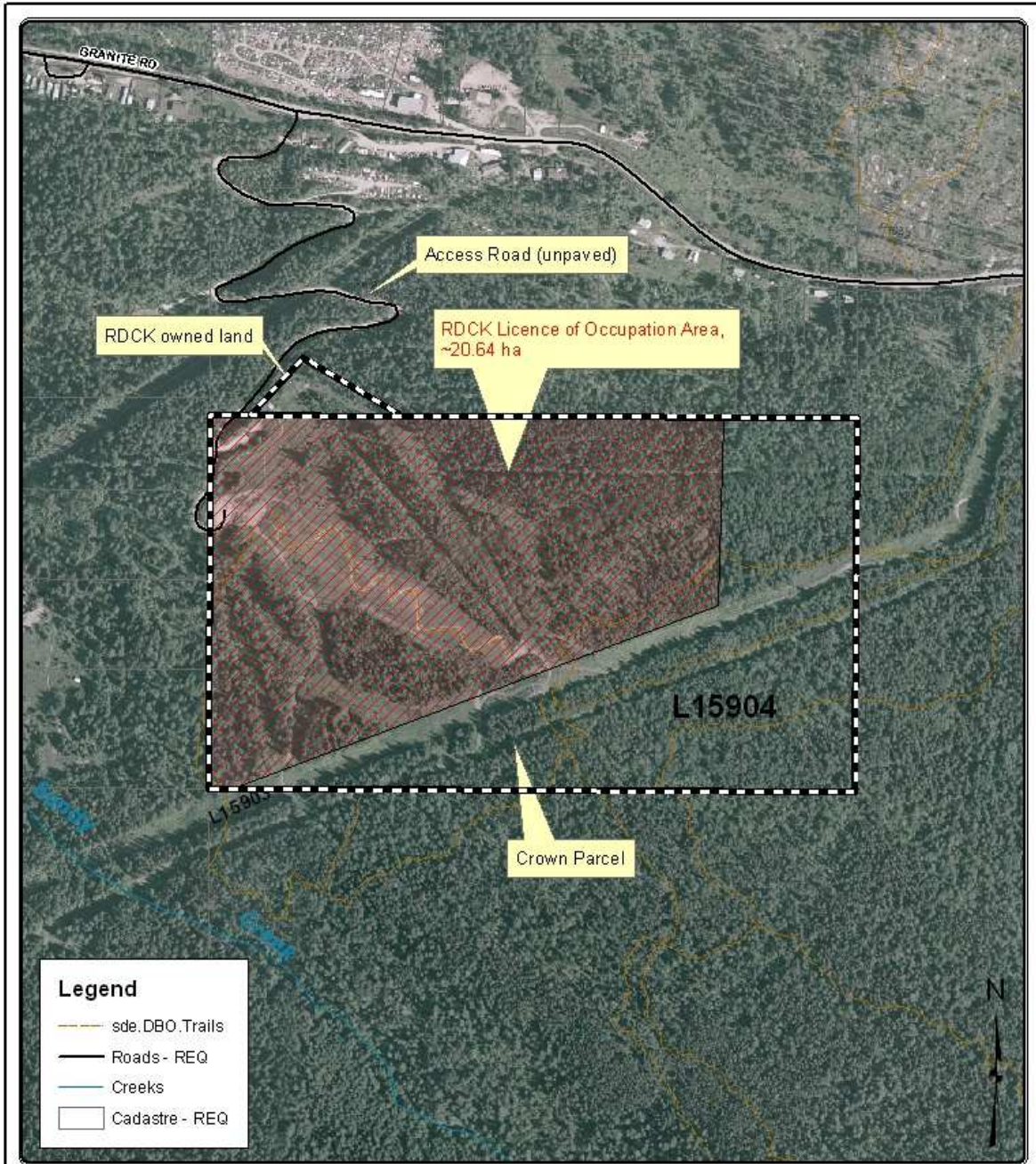





 Box 590, 202 Lakeside Drive, Nelson, BC V1L 5R4
 Phone: (250) 352-6665 Toll-Free 1-800-258-7325 (BC)
 Fax: (250) 352-9300 Info net www.rdk.bc.ca
 The mapping information shown are approximate representations and should only be used for reference purposes. The Regional District of Central Kootenay is not responsible for any errors or omissions on this map.

Morning Mountain Regional Park
 Overview Map

Map Scale:

 Map Projection: UTM Zone 11 Map Datum: NAD83
 Date Printed: 2005
Mapsheet: 82F043.1.2

Map 2 Site Plan



 <p>Box 590, 202 Lakeside Drive, Nelson, BC V1L 5R4 Phone: (250) 352-6665 Toll-Free 1-800-258-7325 (BC) Fax: (250) 352-9300 Internet: www.rdkc.bc.ca</p> <p>The mapping information shown are approximate representations and should only be used for reference purposes. The Regional District of Central Kootenay is not responsible for any errors or omissions on this map.</p>	<p>Morning Mountain Regional Park</p> <p>Site Plan</p>	<p>Map Scale:</p>  <p>Map Projection: UTM Zone 11 Map Datum: NAD83 Date Printed: 2011</p> <p>Mapsheet: 82F043.1.2</p>
--	--	--

Community Significance

Natural Features

- Forested throughout, however human activities are evident throughout and impact its natural condition, such as the proliferation of roads and trails by primarily motorized users.
- Within the Interior Cedar Hemlock Biogeoclimatic zone, which makes up most of the valley bottoms in the West Kootenay.
- Range in elevation is 770m to 890m.



Recreational Features

- Public recreational interests in this facility began to change in the early 1990s when local mountain bikers began constructing unauthorized trails in the area.
- The facility and surrounding Crown lands are used by the public for year round outdoor recreation activities, such as hiking, mountain biking, nature appreciation, tobogganing, skiing, snowshoeing, etc.
- Popular staging area for mountain biking. The facility and the adjacent Crown lands are home to over 50km of multi-use trails.
- For the past 15 years, the facility has been used by the Nelson Cycling Club (NCC) for the annual Fat Tire festival, under agreement with the RDCK. The NCC has established Provincial authorization for the use and development of the facility for mountain biking (see Map 3).
- The facility is not developed, other than some minor remnants of the former ski lodge.

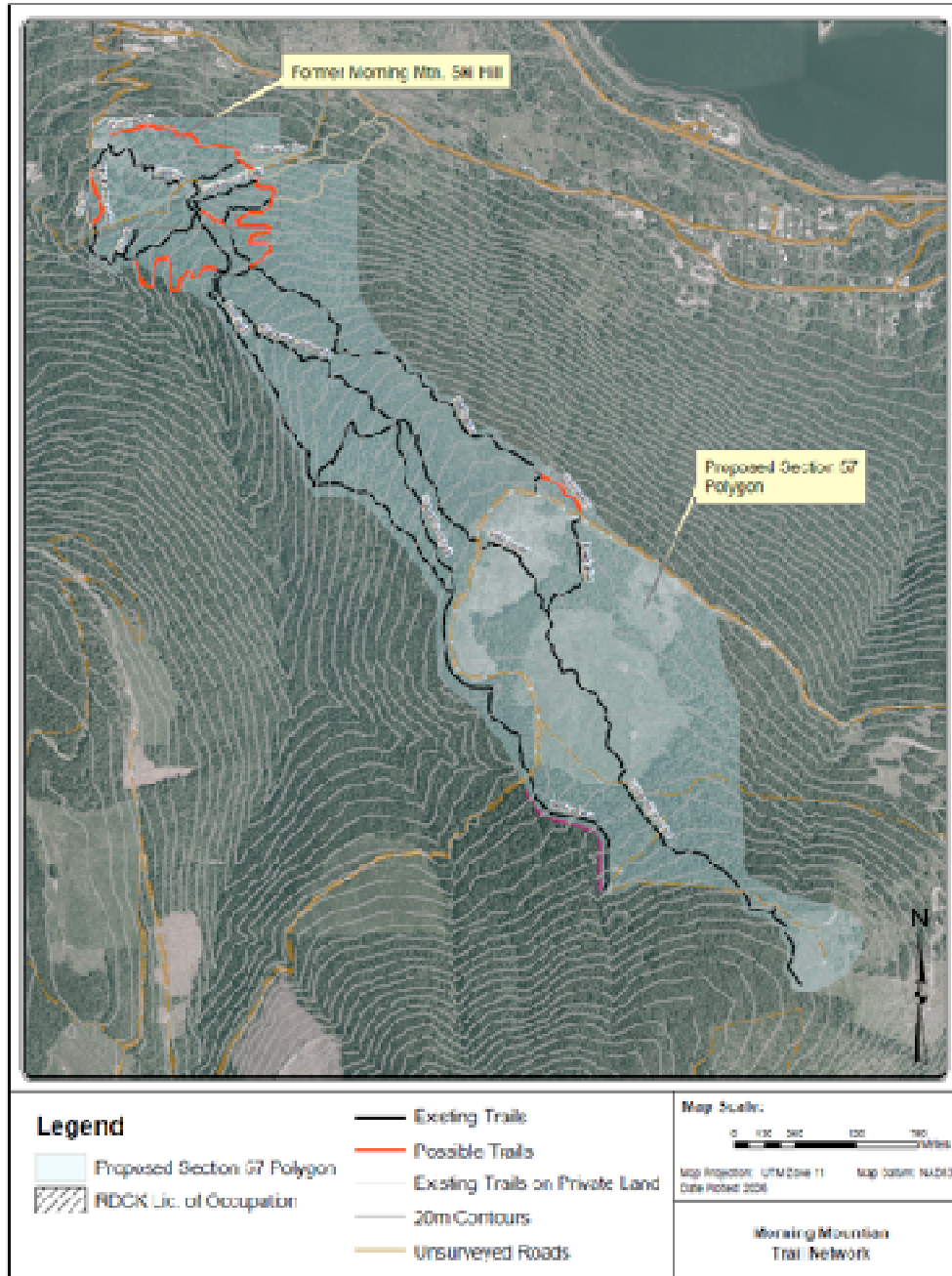
Local & Heritage Features

- Formerly the location of the Blewett Ski Hill, a community run operation serving local residents from 1974-1999. The land clearing left behind from its former use as a ski hill is well seen in the Google image.
- Provides a recreational day-use destination for primarily local residents
- No known heritage or special features.

First Nations

The facility is within the asserted traditional First Nation territories of the Lower Kootenay Band, Ktunaxa Nation Council, and Okanagan Nation Alliance.

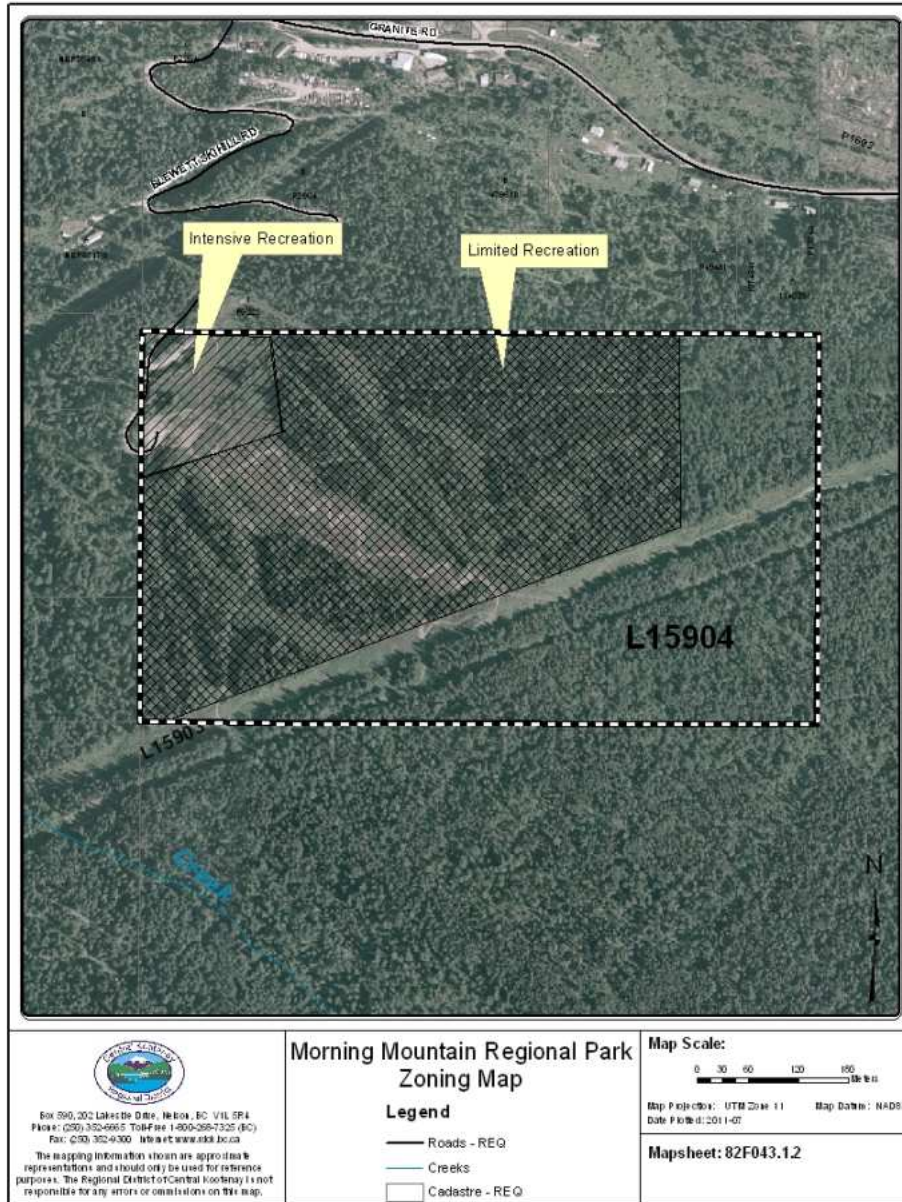
Map 3 – Nelson Cycling Club Tenure Area



Zoning

This POS uses zoning to assist in the planning and management of the facility (see Map 4). The majority of the facility is zoned Limited Recreation, with the objective of providing basic infrastructure, such as route signage and maintenance. This area will remain in its natural state. The remainder of the facility is Intensive Recreation, which includes the parking and trail staging area. Appendix 1 describes the RDCK Regional Parks zoning framework.

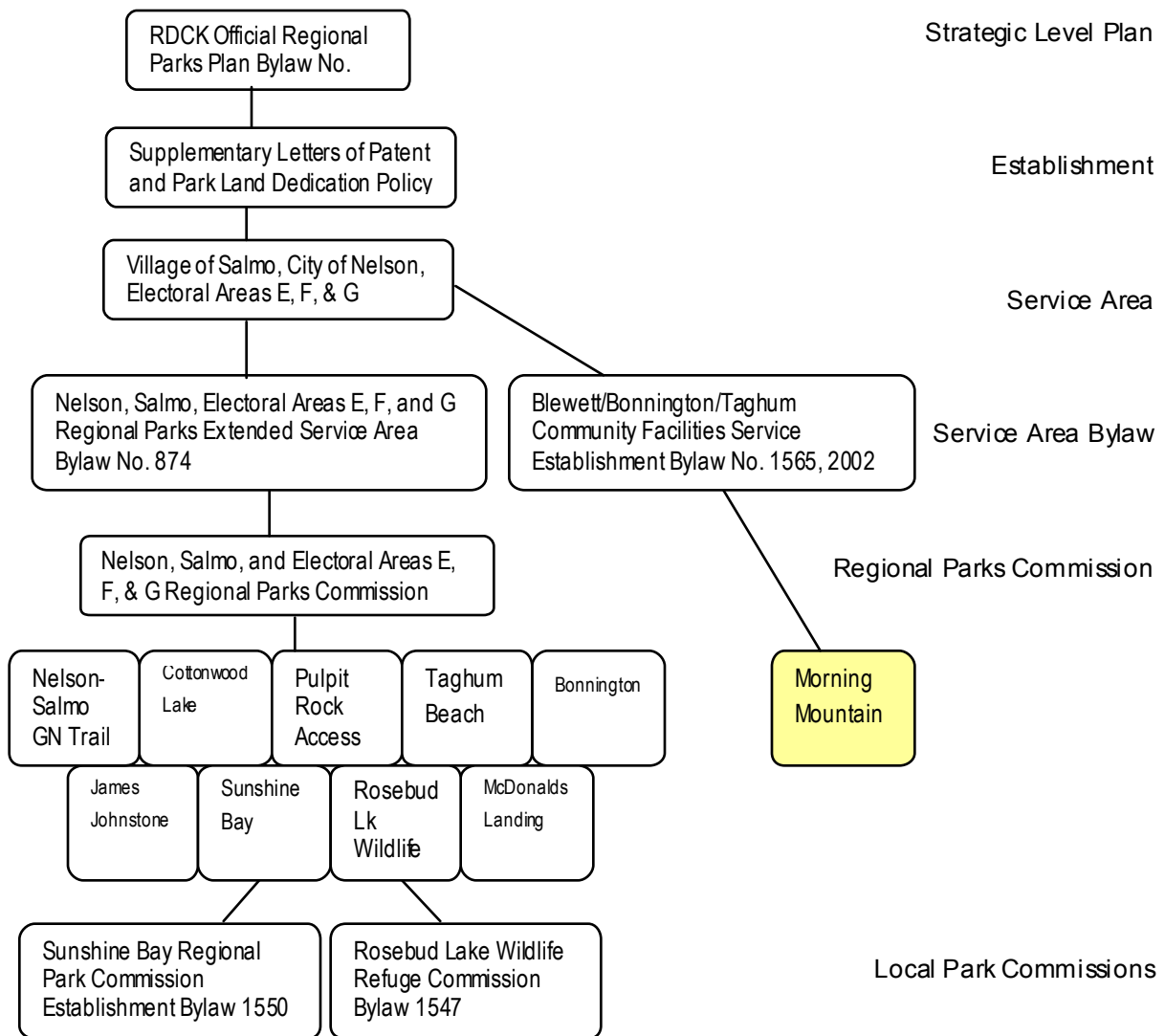
Map 4: Zoning



Operations and Governance

Facility operations is an important component in ensuring that the daily experience of users is enjoyable and safe. Facility operations responsibilities include seeing that regulations are understood and enforced, facilities are maintained and repaired when required, and the day use areas kept clean and accessible. Management of Morning Mountain is undertaken by RDCK staff. The RDCK Board is the decision making authority for the budget, policy, and regulations. The facility is governed by the structure illustrated in Figure 1.

Figure 1: Morning Mountain Governance Structure



Facilities and Activities

RDCK Regional Park rules and regulations are stated in the RDCK Regional Park Regulation Bylaw No. 2173. Note that rules and regulations can be enforced if Morning Mountain becomes a Regional Park.

ACTIVITY	Zone		Comments
	Intensive Recreation	Limited Recreation	
Camping	N	N	
Day-Use	Y	Y	
Dogs	Y	Y	
Horses	Y	Y	
Motorized Use	Y	N	Intensive Recreation Zone only, on existing roads
Swimming	N/A	N/A	
Fishing	N/A	N/A	
Boating	N/A	N/A	
Fire Mgmt	Y	Y	
Grazing	N	N	
Hunting	N	N	
Noxious Weed Control	Y	Y	
Bicycles	Y	Y	
Skiing	Y	Y	
FACILITY			
Administrative Buildings and Compounds	Y	N	
Boat Launch	N/A	N/A	
Roads & Parking Lots	Y	N	
Trails	Y	Y	
Playground	Y	N	
Day-Use Facilities	Y	Y	
Toilets	Y	N	
Picnic Shelter	Y	N	
Fire Pits	Y	N	

Management Priorities

This section outlines the immediate facility priorities that are to be undertaken over the next five to ten years. It is understood that project proposals may come forward which are not anticipated. These projects may be considered on a case by case basis by the General Manager of Community Services, General Manager of Development Services, and the RDCK Board. The focus of works for the first five years is to maintain current standards and make improvements to assist in ensuring public safety.

The RDCK will be responsible for undertaking capital works and intends to undertake projects according to the timeframe presented. The ability to do any of the projects presented is contingent on revenue and the resources available.

Management priorities include the following:

- Primary management interest is to ensure public safety by identifying potential hazardous features and areas that may pose a liability risk to the RDCK, e.g. hazard trees, illegal structures.
- Maintain trail and road system
- Managing illegal activities such as partying and burning in the parking area, and motorized use through bylaw enforcement,.
- Fostering both public and commercial uses compatible with facility values
- Gathering an inventory of natural species, and any potential impacts to those species
- Protecting and maintaining key natural and recreational values, as well as respecting adjacent property owners
- Preparing a stewardship agreement between the RDCK and the Nelson Cycling Club for the continued use and development of the facility.
- Recognizing the legal rights of pre-existing tenure holders and landowners within the facility, and to deal fairly with those interests.

Illegal Dumping and Burning in the Parking Area, and Motorized Use



Projected Cost Analysis

Since Morning Mountain contains basic infrastructure, costs are minimal and should be aimed at 1) ensuring public safety, 2) enhancing the user experience, and 3) maintaining infrastructure. Operating costs will be limited to road and trail maintenance, hazard tree removal, and identification and mitigation of any public safety hazards. A range of \$3,000 to \$5,000 can be expected for basic level of facility operations, excluding contractor costs. It is anticipated that maintenance contractor time will be minimal for this facility.

Development costs for Morning Mountain will vary depending on the types of facilities desired by local residents. It is anticipated that the initial development costs will be in the range of \$20,000, the majority of which will be for parking area improvements to address the illegal motorized access issues. Initial development costs will also be used for signage, hazard tree removal, and any other public safety mitigation functions.

Tax revenues are the current source of base funding for public facilities, specifically stipulated under the Blewett/Bonnington/Taghum Community Facilities Service Establishment Bylaw No. 1565, 2002. Other sources may be used at some point to enhance facilities or services for specific purposes (e.g. day use fees, donations, corporate sponsorship). These sources would have to be studied and approved by the RDCK Regional Board on a case by case basis.

Maintenance Costs

	Period	Projected Cost (\$)
Maintenance contractor	Yearly	3,000-4,000, plus staff administration time
Garbage to dump	Yearly	500-1000
Supplies	On-going	500-1,000
Hazard Tree removal	Yearly	0-3,000
Facility repair contingency	Yearly	0-1,000

Capital Projects & Development Costs

	Period	Projected Cost (\$)
Projects (signage, day use facilities)	As required	0-500/yr
Parking area improvements	Once, incomplete	15,000

Administration Costs

	Period	Projected Cost (\$)
Office support	On-going	Staff time=250-500/mo
Planning	On-going	Staff time=500-2000/mo
Supplies	On-going	100/yr

Other Costs

	Period	Projected Cost (\$)
Ecological Assessment/Inventory Overview	Once, incomplete	Staff time=250-500
Noxious Weed Inventory Overview	Once, incomplete	Staff time=250-500

Consultation and Future Planning

The RDCK Community Services Department and Development Services Department is jointly accountable for the planning, administration, and management of the facility through the application of regulations and policies.

Revisions or updating of this POS will be coordinated by RDCK, with involvement of other agencies, including but not limited to the Provincial and Federal Governments, Nelson, Salmo, and Electoral Areas E, F, & G Regional Parks Commission, First Nations, commercial interests, and other stakeholders as required.

Appendix 1: Regional Park Zoning

	Intensive Recreation	Limited Recreation	Special Feature	Natural Environment
Objective	Provide for a variety of accessible, facility oriented outdoor recreation opportunities	Protect scenic values and to provide for recreation opportunities in a largely undisturbed natural environment	Protect and present significant natural or cultural resources, features or processes because of their special character, fragility, and heritage values	Protect undisturbed natural environment, providing limited recreation opportunities
Use Level	Relatively high density and long duration types of use	Relatively low use, but higher levels associated with nodes of activity or access	Generally low	Very low use to provide for solitary experiences and protect natural features. Uses may be limited and/or controlled
Access	All weather public roads or other types of access where use levels are high	Motorized and non-motorized	Variable, may require special permission	Non-motorized
Location	Contiguous with all weather roads and covering immediate areas, modified landscapes or other high-use areas	Removed from all-weather roads, but easily accessible on a day-use basis	Determined by location of special resources. May be surrounded by or next to any other zone	Removed from easy access
Boundary Definition	Includes areas of high facility development in concentrated areas	Boundaries consider limits of activity and facility areas relative to ecosystem characteristics and features	Area defined by biophysical characteristics or the nature and extent of special resources	Defined by ecosystem limits and geographic features
Recreation Opportunities	Full spectrum of outdoor recreation activities	Limited due to access constraints	Limited to protect special resources	Non-motorized only
Facilities	May be intensely developed for user convenience, e.g. campgrounds, boat launches, parking lots, etc.	Moderately developed for user convenience, e.g. walk-in campsites, docks, small accessory buildings	Interpretive facilities only	Minimal or no facility development
Impacts on Natural Environment	Includes natural resource features in a primarily natural state, but where human presence may be readily visible. Includes areas of high facility development with significant impact on concentrated areas	Area where human presence is not normally visible. Facility development limited to relatively small areas. Facilities visually compatible with natural setting.	None	Natural area with little evidence of human presence. Facilities visually compatible with natural setting.
Management Guidelines	Oriented to maintaining a high quality recreation experience.	Oriented to maintaining a natural environment and high quality recreation experience.	High level of management protection with on-going monitoring. Oriented to maintaining special resources.	Oriented to protecting the natural environment. Managed to ensure low visitor use levels.
Examples of Zoning	Taghum Beach, Robson Wharf, Bonnington, Pass Creek	Rosebud Lake, Winlaw Nature Park, Roseberry Parklands	Historic Answorth Wharf, Brilliant Bridge, Sandon	Portion of Sunshine Bay