

**Regional District of Central Kootenay
Electoral Area D**

**Lardeau Boat Launch
Purpose and Operations Statement**



TABLE OF CONTENTS

INTRODUCTION	4
FACILITY PURPOSE	4
COMMUNITY SIGNIFICANCE	7
NATURAL FEATURES	7
RECREATIONAL FEATURES	7
LOCAL & HERITAGE FEATURES	7
FIRST NATIONS	7
ZONING	7
OPERATIONS AND GOVERNANCE	9
FACILITIES AND ACTIVITIES	9
MANAGEMENT PRIORITIES	10
PROJECTED COST ANALYSIS	11
CONSULTATION AND FUTURE PLANNING	12
APPENDIX 1: REGIONAL PARK ZONING	13

LARDEAU BOAT LAUNCH PURPOSE AND OPERATIONS STATEMENT

Introduction

This Purpose and Operations Statement (POS) will guide the management of Lardeau Boat Launch into the foreseeable future.

Lardeau Boat Launch is approximately 2.3 ha (5.7 ac) in size and located along the shores of northern Kootenay Lake in the community of Lardeau (see Map 1). The facility is accessed via Kootenay Street, and includes an access road, boat launch, and parking area. The facility includes a number of Crown owned lots surveyed in 1893, an undeveloped portion of road right-of-way, unsurveyed waterfront Crown land, and a water portion encompassing the boat launch. The majority of the facility is used intensively for public recreational purposes.

It is important to note that Lardeau Boat Launch is not an RDCK Regional Park unless it is recommended by the Kaslo and Area D Regional Facilities, Recreation and Parks Service Commission, and resolved by the RDCK Board to establish it as such. The Parks Commission may consider inclusion of Lardeau Boat Launch as a Waterfront Access Park in the RDCK Official Regional Parks Plan.

The Lardeau Boat Launch property is owed by the Province of BC and is operated as a public recreational facility through a Licence of Occupation (LoO). The LoO was signed on (date TBA) by both the Province of BC and the RDCK.

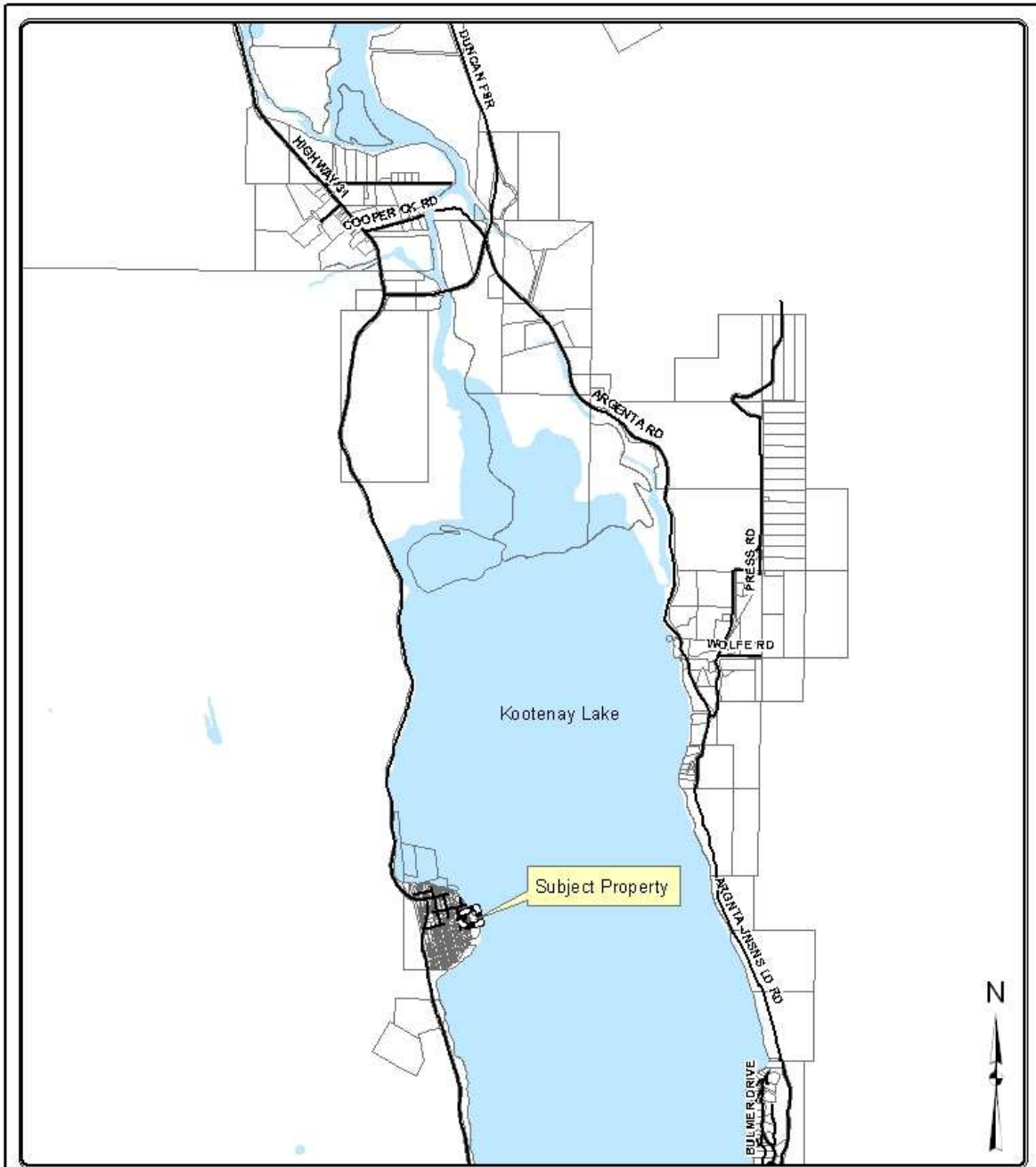
The facility has minimal development, and is used primarily by local residents. The purpose of the facility is to foster and permanently establish the existing public recreational use.

This POS provides the direction for the priority management and development of Lardeau Boat Launch. Implementation of this POS is of an operational nature, with follow-through on an as-needed basis and dependent on the availability of financial and staffing capacity.

Facility Purpose

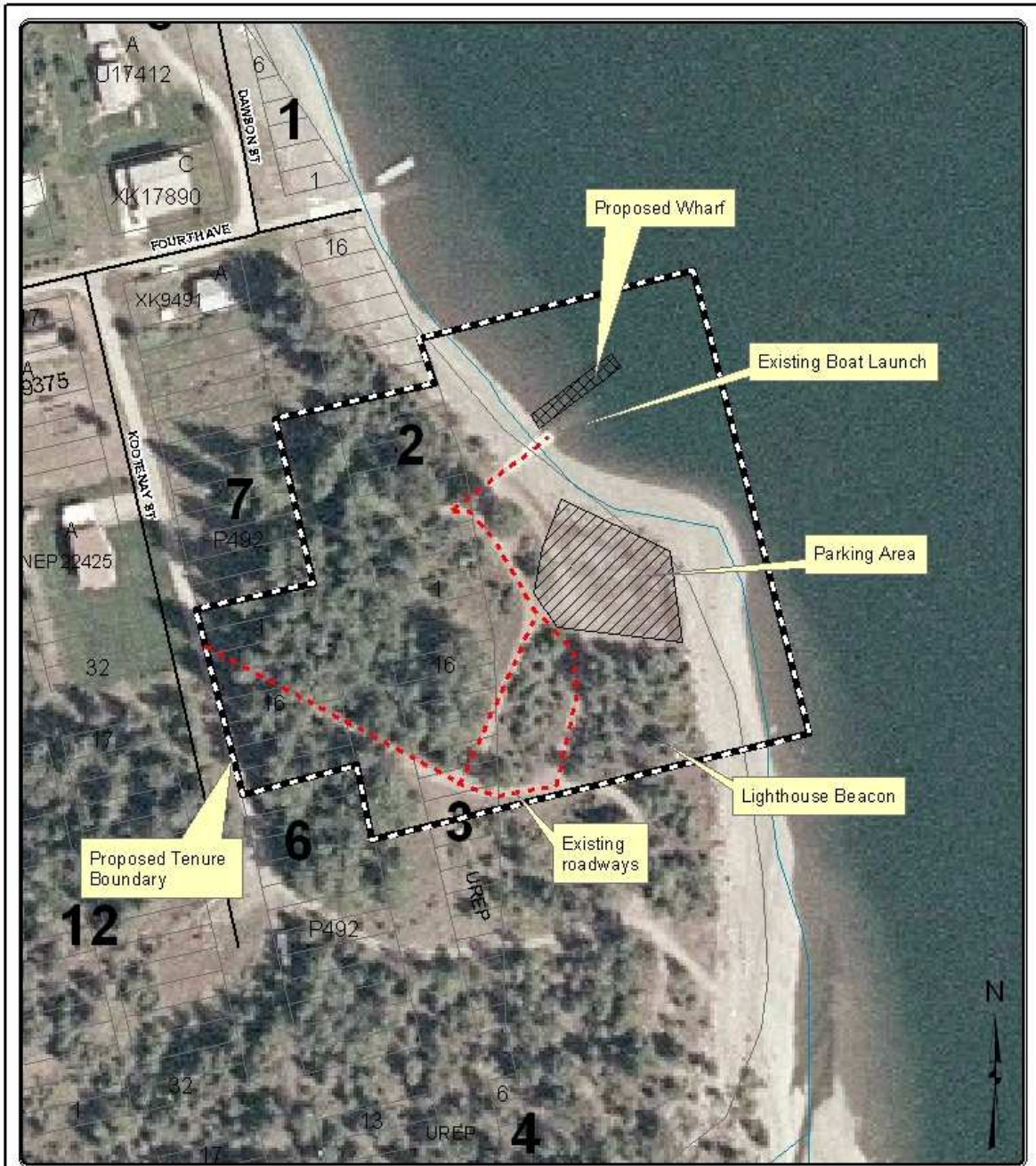
Lardeau Boat Launch is primarily used by local residents for day-use public recreation opportunities, including boating and picnicking.


Map 1: Facility Location



 <p>Box 590, 202 Lakeside Drive, Nelson, BC V1L 5R4 Phone: (250) 352-6665 Toll-Free 1-800-258-7325 (BC) Fax: (250) 352-9300 http://www.rdkd.bc.ca</p> <p>The mapping information shown are approximate representations and should only be used for reference purposes. The Regional District of Central Kootenay is not responsible for any errors or omissions on this map.</p>	<h3 style="text-align: center;">Lardeau Boat Launch</h3> <p>Legend</p> <ul style="list-style-type: none"> Administrative Boundary Roads - REQ Cadastre - REQ Lake 	<p>Map Scale:</p> <p style="text-align: center;">0 237.5 475 950 1,425 Meters</p> <p>Map Projection: UTM Zone 11 Map Datum: NAD83 Date Printed: 2011-08</p> <p>Mapsheet: 82F043.1.2</p>
---	---	--

Map 2 Site Plan




 Box 590, 202 Lakeside Drive, Nelson, BC V1L 5P4
 Phone: (250) 352-6665 Toll-Free 1-800-258-7325 (BC)
 Fax: (250) 352-9300 Internet: www.rdkc.bo.ca
 The mapping information shown are approximate representations and should only be used for reference purposes. The Regional District of Central Kootenay is not responsible for any errors or omissions on this map.

Lardeau Boat Launch

Legend

- Roads - REQ
- Cadastre - REQ

Map Scale:

0 10 20 40 60 Meters

Map Projection: UTM Zone 11 Map Datum: NAD83
 Date Printed: 2011-08

Mapsheet: 82F043.1.2

Community Significance

Natural Features

- Sparsely forested throughout, however human activities are clearly evident and impact its natural condition.
- Within the Interior Cedar Hemlock Biogeoclimatic zone, which makes up most of the valley bottoms in the West Kootenay.
- Relatively flat site, range in elevation is 535m at the shoreline to 545m.

Recreational Features

- The facility and surrounding Crown lands is used by the public for year round outdoor recreation activities, such as boating, picnicking, walking, etc.
- Well used boat launch and day-use area. Used by both local residents and tourists.
- The facility is minimally developed, and includes an access road and boat launch.

Local & Heritage Features

- Serves as a transportation life line for other communities to the north (Lardeau Valley, Howser, Meadow Creek, Cooper Creek, Argenta) at times when Highway 31 is closed for emergency purposes (e.g. avalanche, rock slides, etc.).
- No known heritage or special features.

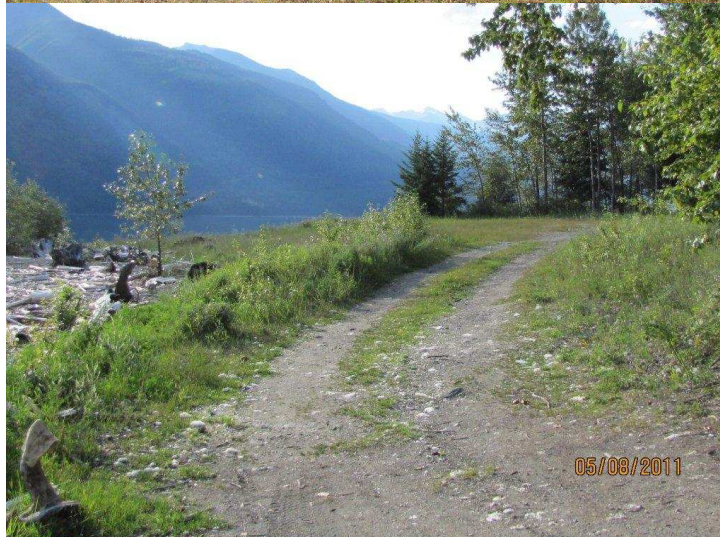
First Nations

The facility is within the asserted traditional First Nation territories of the Akisqnuq First Nation, Lower Kootenay Band, Ktunaxa Nation Council, and Shuswap Indian Band.

Zoning

This POS uses zoning to assist in the planning and management of the facility. The entire facility is zoned Intensive Recreation, with the objective of providing a public recreational facility. Appendix 1 describes the RDCK Regional Parks zoning framework.

Site Photos



Operations and Governance

Facility operations is an important component in ensuring that the daily experience of users is enjoyable and safe. Facility operations responsibilities include seeing that regulations are understood, facilities are maintained and repaired when required, and the day use areas kept clean and accessible. Management of Lardeau Boat Launch is undertaken by RDCK staff, in cooperation with local residents and the Kaslo and Area D Regional Facilities, Recreation and Parks Service Commission. The RDCK Board is the decision making authority for the budget, policy, and regulations. If this facility becomes a Regional Park at a future date, it will be operated and governed pursuant to the RDCK Official Regional Parks Plan.

Facilities and Activities

RDCK Regional Park rules and regulations are stated in the RDCK Regional Park Regulation Bylaw No. 2173. Note that rules and regulations can be enforced if Lardeau Boat Launch becomes a Regional Park.

ACTIVITY	Zone	
	Intensive Recreation	Comments
Camping	N	
Day-Use	Y	
Dogs	Y	
Horses	Y	
Motorized Use	Y	On existing roads
Swimming	N	
Fishing	Y	
Boating	Y	
Fire Mgmt	Y	
Grazing	N	
Hunting	N	
Noxious Weed Control	Y	
Bicycles	Y	
Skiing	Y	
FACILITY		
Administrative Buildings and Compounds	N	
Boat Launch	Y	
Roads & Parking Lots	Y	
Trails	Y	
Playground	N	
Day-Use Facilities	Y	
Toilets	N	
Picnic Shelter	N	
Fire Pits	N	

Management Priorities

This section outlines the immediate facility priorities that are to be undertaken over the next five to ten years. It is understood that project proposals may come forward which are not anticipated. These projects may be considered on a case by case basis by the General Manager of Community Services, General Manager of Development Services, Kaslo and Area D Regional Facilities, Recreation and Parks Service Commission, and the RDCK Board. The focus of works for the first five years is to maintain current standards and make improvements to assist in ensuring public safety.

The RDCK will be responsible for undertaking capital works and intends to undertake projects according to the timeframe presented. The ability to do any of the projects presented is contingent on revenue and the resources available.

Management priorities include the following:

- Primary management interest is to ensure public safety by identifying potential hazardous features and areas that may pose a liability risk to the RDCK, e.g. hazard trees, illegal and/or unsafe structures.
- Maintain facility infrastructure, such as roads, trails, boat launch, etc.
- Fostering both public and commercial uses compatible with facility values
- Gathering an inventory natural, cultural, and archaeological features, and any potential impacts to those features
- Protecting and maintaining key natural and recreational values, as well as respecting adjacent property owners

Projected Cost Analysis

Since Lardeau Boat Launch contains basic infrastructure, costs are minimal and should be aimed at 1) ensuring public safety, 2) enhancing the user experience, and 3) maintaining infrastructure. Operating costs will be limited to maintenance of the boat launch, road and trail maintenance, hazard tree removal, and identification and mitigation of any public safety hazards. A range of \$2,000 to \$3,000 per year can be expected for basic level of facility maintenance.

Development costs for Lardeau Boat Launch will vary depending on the types of facilities desired by local residents. It is anticipated that the initial development costs will be in the range of \$22,000, the majority of which will be for the proposed wharf beside the boat launch (see map 2). Initial development costs may also be used for signage, hazard tree removal, and any other costs for abating public safety risks.

Tax revenues are the current source of base funding for public facilities. Other sources may be used at some point to enhance facilities or services for specific purposes (e.g. day use fees, donations, corporate sponsorship). These sources would have to be studied and approved by the RDCK Regional Board on a case by case basis.

Maintenance Costs

	Period	Projected Cost (\$)
Supplies	On-going	100-500
Hazard Tree removal	Yearly	0-3,000
Facility repair contingency (to replace boat launch after 20 years)	Yearly	1,000
Facility maintenance	Yearly	1,000

Capital Projects & Development Costs

	Period	Projected Cost (\$)
Wharf & walkway	Once, incomplete	20,300
Projects (signage, day use facilities)	As required	0-500/yr

Administration Costs

	Period	Projected Cost (\$)
Office support	On-going	Staff time=250-500/mo
Planning	On-going	Staff time=500-2000/mo
Supplies	On-going	100/yr

Other Costs

	Period	Projected Cost (\$)
Ecological Assessment/Inventory Overview	Once, incomplete	Staff time=250-500
Noxious Weed Inventory Overview	Once, incomplete	Staff time=250-500

Consultation and Future Planning

The RDCK Community Services Department and Development Services Department is jointly accountable for the planning, administration, and management of the facility through the application of regulations and policies.

Revisions or updating of this POS will be coordinated by RDCK, with involvement of other agencies, including but not limited to the Provincial and Federal Governments, First Nations, commercial interests, and other stakeholders as required.

Appendix 1: Regional Park Zoning

	Intensive Recreation	Limited Recreation	Special Feature	Natural Environment
Objective	Provide for a variety of accessible, facility oriented outdoor recreation opportunities	Protect scenic values and to provide for recreation opportunities in a largely undisturbed natural environment	Protect and present significant natural or cultural resources, features or processes because of their special character, fragility, and heritage values	Protect undisturbed natural environment, providing limited recreation opportunities
Use Level	Relatively high density and long duration types of use	Relatively low use, but higher levels associated with nodes of activity or access	Generally low	Very low use to provide for solitary experiences and protect natural features. Uses may be limited and/or controlled
Access	All weather public roads or other types of access where use levels are high	Motorized and non-motorized	Variable, may require special permission	Non-motorized
Location	Contiguous with all weather roads and covering immediate areas, modified landscapes or other high-use areas	Removed from all-weather roads, but easily accessible on a day-use basis	Determined by location of special resources. May be surrounded by or next to any other zone	Removed from easy access
Boundary Definition	Includes areas of high facility development in concentrated areas	Boundaries consider limits of activity and facility areas relative to ecosystem characteristics and features	Area defined by biophysical characteristics or the nature and extent of special resources	Defined by ecosystem limits and geographic features
Recreation Opportunities	Full spectrum of outdoor recreation activities	Limited due to access constraints	Limited to protect special resources	Non-motorized only
Facilities	May be intensely developed for user convenience, e.g. campgrounds, boat launches, parking lots, etc.	Moderately developed for user convenience, e.g. walk-in campsites, docks, small accessory buildings	Interpretive facilities only	Minimal or no facility development
Impacts on Natural Environment	Includes natural resource features in a primarily natural state, but where human presence may be readily visible. Includes areas of high facility development with significant impact on concentrated areas	Area where human presence is not normally visible. Facility development limited to relatively small areas. Facilities visually compatible with natural setting.	None	Natural area with little evidence of human presence. Facilities visually compatible with natural setting.
Management Guidelines	Oriented to maintaining a high quality recreation experience.	Oriented to maintaining a natural environment and high quality recreation experience.	High level of management protection with on-going monitoring. Oriented to maintaining special resources.	Oriented to protecting the natural environment. Managed to ensure low visitor use levels.
Examples of Zoning	Taghum Beach, Robson Wharf, Bonnington, Pass Creek	Rosebud Lake, Winlaw Nature Park, Roseberry Parklands	Historic Ainsworth Wharf, Brilliant Bridge, Sandon	Portion of Sunshine Bay