

Regional District of Central Kootenay Electoral Area I

Glade Regional Park Purpose and Operations Statement





TABLE OF CONTENTS

INTRODUCTION AND BACKGROUND	4
PARK PURPOSE	4
COMMUNITY SIGNIFICANCE	8
NATURAL FEATURES	8
RECREATIONAL FEATURES.....	8
LOCAL & HERITAGE FEATURES	8
FIRST NATIONS	8
ZONING	8
OPERATIONS AND GOVERNANCE	9
FACILITIES AND ACTIVITIES	10
MANAGEMENT PRIORITIES	11
PROJECTED COST ANALYSIS	12
CONSULTATION AND FUTURE PLANNING	13
APPENDIX 1: REGIONAL PARK ZONING	14

GLADE REGIONAL PARK PURPOSE AND OPERATIONS STATEMENT

Introduction and Background

This Purpose and Operations Statement (POS) will guide the management of Glade Regional Park into the foreseeable future.

Legal: That part of Sublot 7, District Lot 1239, Kootenay District, Plan X56, shown coloured Red on Reference Plan 43665I.

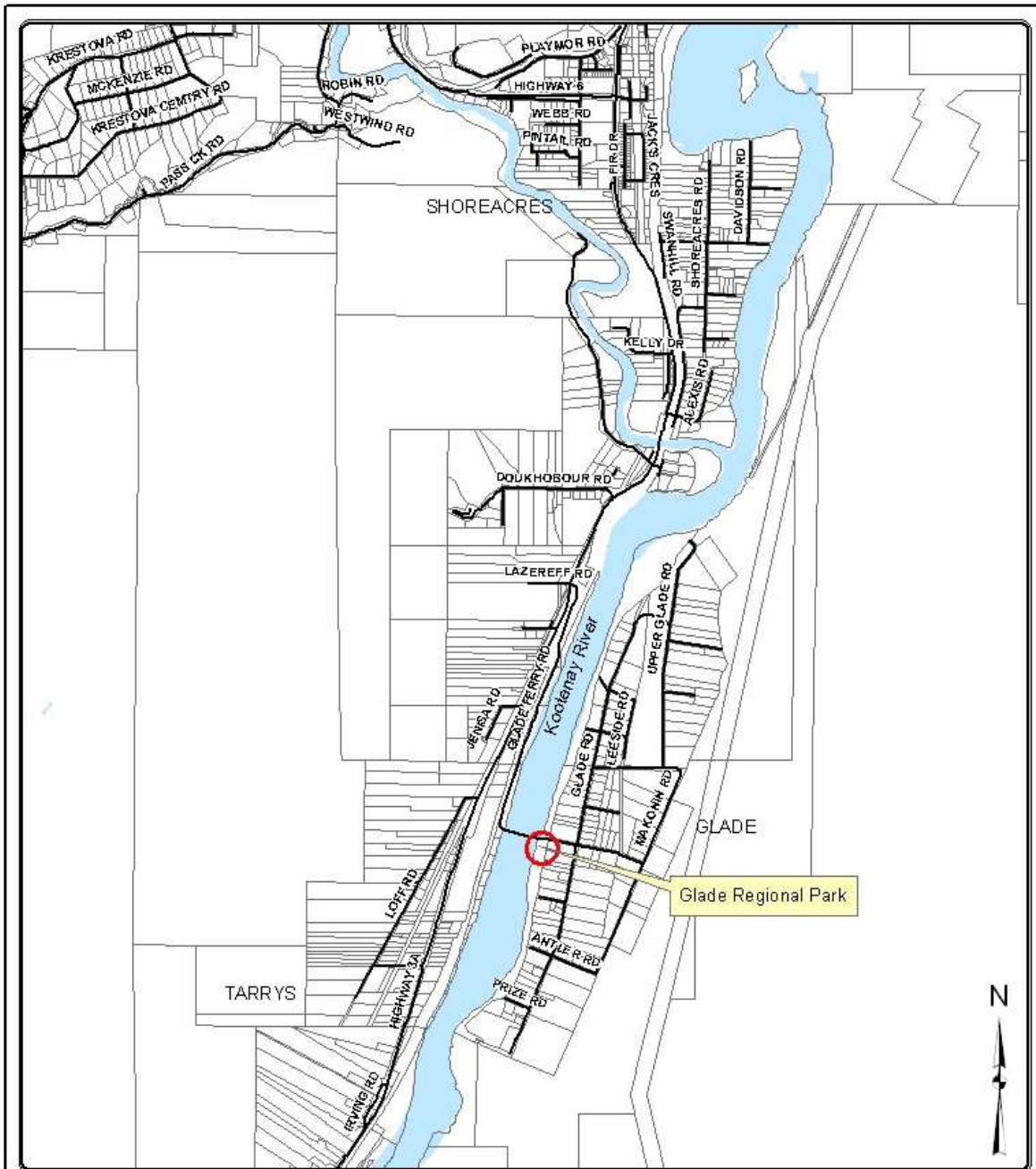
Glade Regional Park is approximately 0.4 ha (1 ac) in size and located along the shores of Kootenay River in the community of Glade (see Map 1). The park is the staging area for entry into Glade and includes a wharf and boat launch, picnic area, landscaped grassy area, and 2 utility buildings. The property is leased to the RDCK through a 20 year Memorandum of Understanding with Brilliant Power Expansion Corporation and Brilliant Power Corporation, dated October 1, 2007. It is a public day use area, used mostly by local residents. It is designated a Waterfront Access Park in the RDCK Official Community Parks Plan.

This POS provides the direction for the priority management and development of Glade Regional Park. Implementation of this POS is of an operational nature, with follow-through on an as-needed basis and dependent on the availability of financial and staffing capacity.

Park Purpose

Glade Regional Park serves as a local day use recreation area for locals and tourists alike. Opportunities include boating, fishing, swimming, nature appreciation, and picnicking.

Map 1: Park Location



 <p>Box 590, 202 Lakeside Drive, Nelson, BC V1L 5P4 Phone: (250) 352-6665 Toll-Free 1-800-258-7325 (BC) Fax: (250) 352-9300 Info: www.rdkc.ko.ca</p> <p>The mapping information shown are approximate representations and should only be used for reference purposes. The Regional District of Central Kootenay is not responsible for any errors or omissions on this map.</p>	<p style="text-align: center;">GLADE REGIONAL PARK</p> <p>Legend</p> <ul style="list-style-type: none"> — Roads - REQ □ Cadastre - REQ ■ Lake 	<p>Map Scale:</p>  <p>Map Projection: UTM Zone 11 Map Datum: NAD83 Date Printed: 2011-08</p> <p>Mapsheet: 82F043.1.2</p>
--	--	---

Map 2 Site Plan



Glade Park Photos (August 2011)



Community Significance

Natural Features

- The park is a flat landscaped grassy recreation area, that is sparsely treed.
- The park is at an elevation of 450m, fronted by Kootenay River.



Recreational Features

- The park and surrounding shoreline is used by the public for year round outdoor recreation activities, such as boating, picnicking, walking, etc.
- Well used wharf and boat launch day-use area serving mostly local residents of Glade.
- The facility is minimally developed, and includes an access road, boat launch, and two utility buildings.

Local & Heritage Features

- The park serves as a staging area for entry into the small farming community of Glade from the ferry. The wharf and boat launch was completed in 1992 and named Campbell's Landing in commemoration of one of Glade's long time residents Ron Campbell. The wharf and boat launch were replaced in 2007.

First Nations

The park is within the asserted traditional First Nation territories of the Lower Kootenay Band, Ktunaxa Nation Council, Okanagan Nation Alliance, Lower Similkameen Indian Band, and Osoyoos Indian Band.

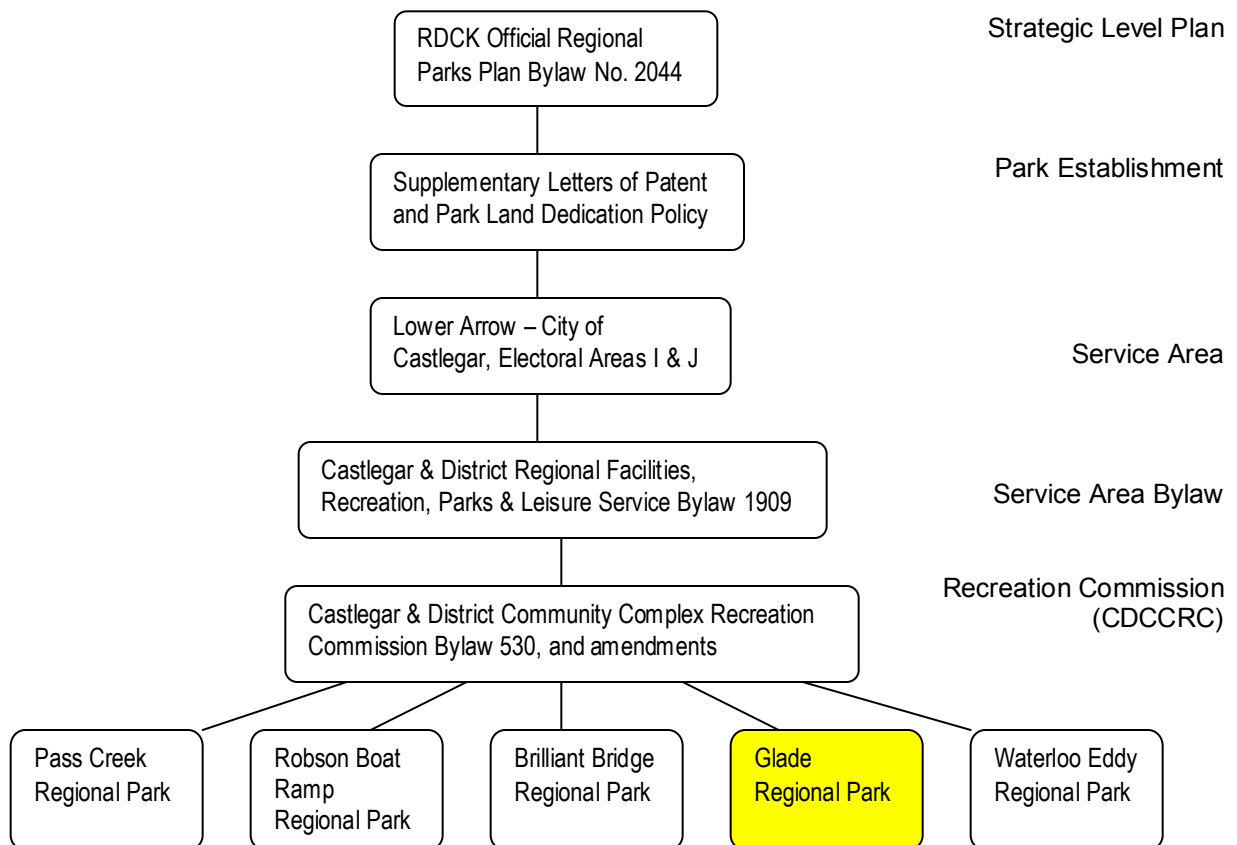
Zoning

This POS uses zoning to assist in the planning and management of the park. The entire park is zoned Intensive Recreation, with the objective of providing a public recreational facility. Appendix 1 describes the RDCK Regional Parks zoning framework.

Operations and Governance

Park operations is an important component in ensuring that the daily experience of park users is enjoyable and safe. Park operations responsibilities include seeing that park regulations are understood and enforced, facilities are maintained and repaired when required, and the day use areas kept clean and accessible. Management of Glade Regional Park is undertaken jointly by RDCK staff and Castlegar & District Community Complex Recreation Commission (CDCCRC). The CDCCRC makes recommendations to the RDCK Board. The RDCK Board is the decision making authority for the park budget, policy, and regulations.

Figure 1: Glade Regional Park Governance Structure



Facilities and Activities

RDCK Regional Park rules and regulations are stated in the RDCK Regional Park Regulation Bylaw No. 2173.

Important Note: Activities and Facilities proposed for any portion of the park is subject to approval by the landowner (Brilliant Power Corporation and Brilliant Power Expansion Corporation).

ACTIVITY	Zone	
	Intensive Recreation	Comments
Camping	N	
Day-Use	Y	
Dogs	Y	
Horses	Y	
Motorized Use	Y	On existing roads
Swimming	Y	
Fishing	Y	
Boating	Y	
Fire Mgmt	Y	
Grazing	N	
Hunting	N	
Noxious Weed Control	Y	
Bicycles	Y	
Skiing	Y	
FACILITY		
Administrative Buildings and Compounds	Y	
Boat Launch	Y	
Roads & Parking Lots	Y	
Trails	Y	
Playground	N	
Day-Use Facilities	Y	
Toilets	Y	
Picnic Shelter	Y	
Fire Pits	Y	

Management Priorities

This section outlines the immediate park priorities that are to be undertaken over the next five to ten years. It is understood that project proposals may come forward which are not anticipated, based on immediate management issues. These projects may be considered on a case by case basis by the General Manager of Community Services, General Manager of Development Services, the CDCCRC, and the RDCK Board.

The RDCK will be responsible for funding capital works at the park, and intends to prioritize projects listed below. The ability to do any of the projects presented is contingent on revenue and the resources available.

Management priorities include the following:

- Primary management interest is to ensure public safety by identifying potential hazardous features and areas that may pose a liability risk to the RDCK (e.g. illegal structures, illegal activities)
- Enforcing park rules and regulations, pursuant to RDCK Park Regulation Bylaw 2173
- Maintaining park infrastructure
- Fostering both public and commercial activities compatible with park values
- Managing commercial activities through a Park Use Permit process
- Gathering an inventory of natural species, and any potential impacts to those species
- Protecting and maintaining key park natural and recreational values (e.g. sensitive natural features/areas, sensitive archaeological areas, focusing development away from sensitive features), as well as respecting adjacent property owners

Projected Cost Analysis

Since Glade Regional Park contains basic infrastructure, costs are minimal and should be aimed at 1) ensuring public safety, 2) enhancing the user experience, and 3) maintaining park infrastructure. Operating costs will be limited to road and trail maintenance and identification and mitigation of any public safety hazards. A range of \$3,000 to \$5,000 can be expected for basic level of facility operations.

Future development costs for Glade will vary depending on the types of facilities desired by local residents.

Tax revenues are the current source of base funding for regional parks. Other sources may be used at some point to enhance facilities or services for specific purposes (e.g. day use fees, donations, corporate sponsorship). These sources would have to be studied and recommended by the CDCCRC and be approved by the RDCK Regional Board on a case by case basis.

Maintenance Costs

	Period	Projected Cost (\$)
Supplies	On-going	100-500
Hazard Tree removal	Yearly	0-3,000
Facility repair contingency (to replace wharf after 20 years)	Yearly	1,000
Facility maintenance	Yearly	1,000

Capital Projects & Development Costs

	Period	Projected Cost (\$)
Projects (signage, day use facilities)	As required	0-500/yr

Administration Costs

	Period	Projected Cost (\$)
Office support	On-going	Staff time=250-500/mo
Planning	On-going	Staff time=500-2000/mo
Supplies	On-going	100/yr

Other Costs

	Period	Projected Cost (\$)
???		

Consultation and Future Planning

The RDCK Community Services Department and Development Services Department is jointly accountable for the planning, administration, and management of the park through the application of regulations and policies.

Revisions or updating of this POS will be coordinated by RDCK, with involvement of other agencies, including but not limited to the Provincial and Federal Governments, CDCCRC, City of Castlegar, First Nations, commercial interests, and other stakeholders as required.

Appendix 1: Regional Park Zoning

	Intensive Recreation	Limited Recreation	Special Feature	Natural Environment
Objective	Provide for a variety of accessible, facility oriented outdoor recreation opportunities	Protect scenic values and to provide for recreation opportunities in a largely undisturbed natural environment	Protect and present significant natural or cultural resources, features or processes because of their special character, fragility, and heritage values	Protect undisturbed natural environment, providing limited recreation opportunities
Use Level	Relatively high density and long duration types of use	Relatively low use, but higher levels associated with nodes of activity or access	Generally low	Very low use to provide for solitary experiences and protect natural features. Uses may be limited and/or controlled
Access	All weather public roads or other types of access where use levels are high	Motorized and non-motorized	Variable, may require special permission	Non-motorized
Location	Contiguous with all weather roads and covering immediate areas, modified landscapes or other high-use areas	Removed from all-weather roads, but easily accessible on a day-use basis	Determined by location of special resources. May be surrounded by or next to any other zone	Removed from easy access
Boundary Definition	Includes areas of high facility development in concentrated areas	Boundaries consider limits of activity and facility areas relative to ecosystem characteristics and features	Area defined by biophysical characteristics or the nature and extent of special resources	Defined by ecosystem limits and geographic features
Recreation Opportunities	Full spectrum of outdoor recreation activities	Limited due to access constraints	Limited to protect special resources	Non-motorized only
Facilities	May be intensely developed for user convenience, e.g. campgrounds, boat launches, parking lots, etc.	Moderately developed for user convenience, e.g. walk-in campsites, docks, small accessory buildings	Interpretive facilities only	Minimal or no facility development
Impacts on Natural Environment	Includes natural resource features in a primarily natural state, but where human presence may be readily visible. Includes areas of high facility development with significant impact on concentrated areas	Area where human presence is not normally visible. Facility development limited to relatively small areas. Facilities visually compatible with natural setting.	None	Natural area with little evidence of human presence. Facilities visually compatible with natural setting.
Management Guidelines	Oriented to maintaining a high quality recreation experience.	Oriented to maintaining a natural environment and high quality recreation experience.	High level of management protection with on-going monitoring. Oriented to maintaining special resources.	Oriented to protecting the natural environment. Managed to ensure low visitor use levels.
Examples of Zoning	Glade, Robson Wharf, Bonnington, Pass Creek	Rosebud Lake, Winlaw Nature Park, Roseberry Parklands	Historic Ainsworth Wharf, Brilliant Bridge, Sandon	Portion of Sunshine Bay