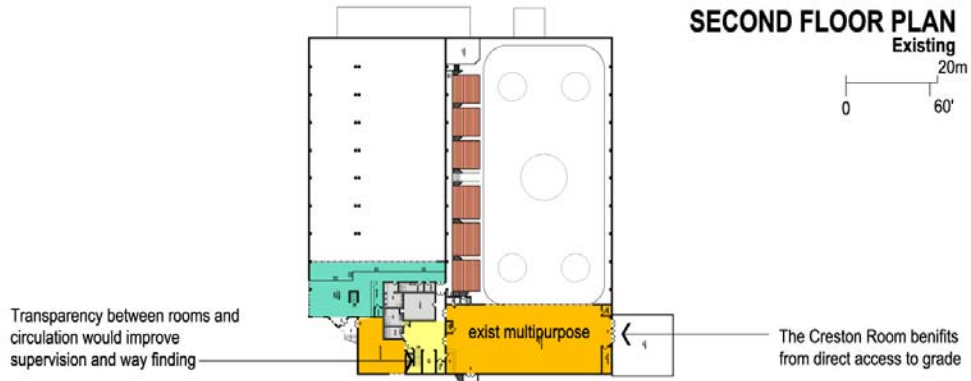


The Existing Facilities

Future facility is an opportunity to improve spatial relationships and operational concerns. This panel summarizes some of these observations:



Maintenance and Upgrades

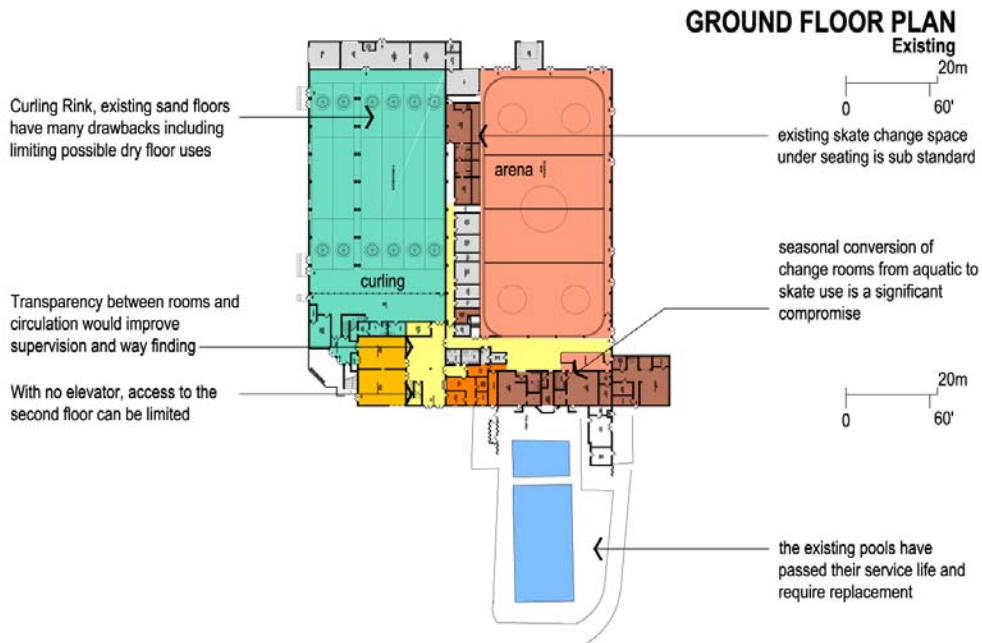
Staff have identified a number of maintenance concerns that might be addressed in future renovations or expansions:

1. Energy use
2. Supervision and Control
3. Curling Rink Floor

Engineering Reports have identified numerous necessary upgrades:

(Recreation Excellence / Seimens Report 2005)

1. Preventative maintenance:
2. Immediate repairs:
3. Necessary Upgrades:
4. Future upgrades:



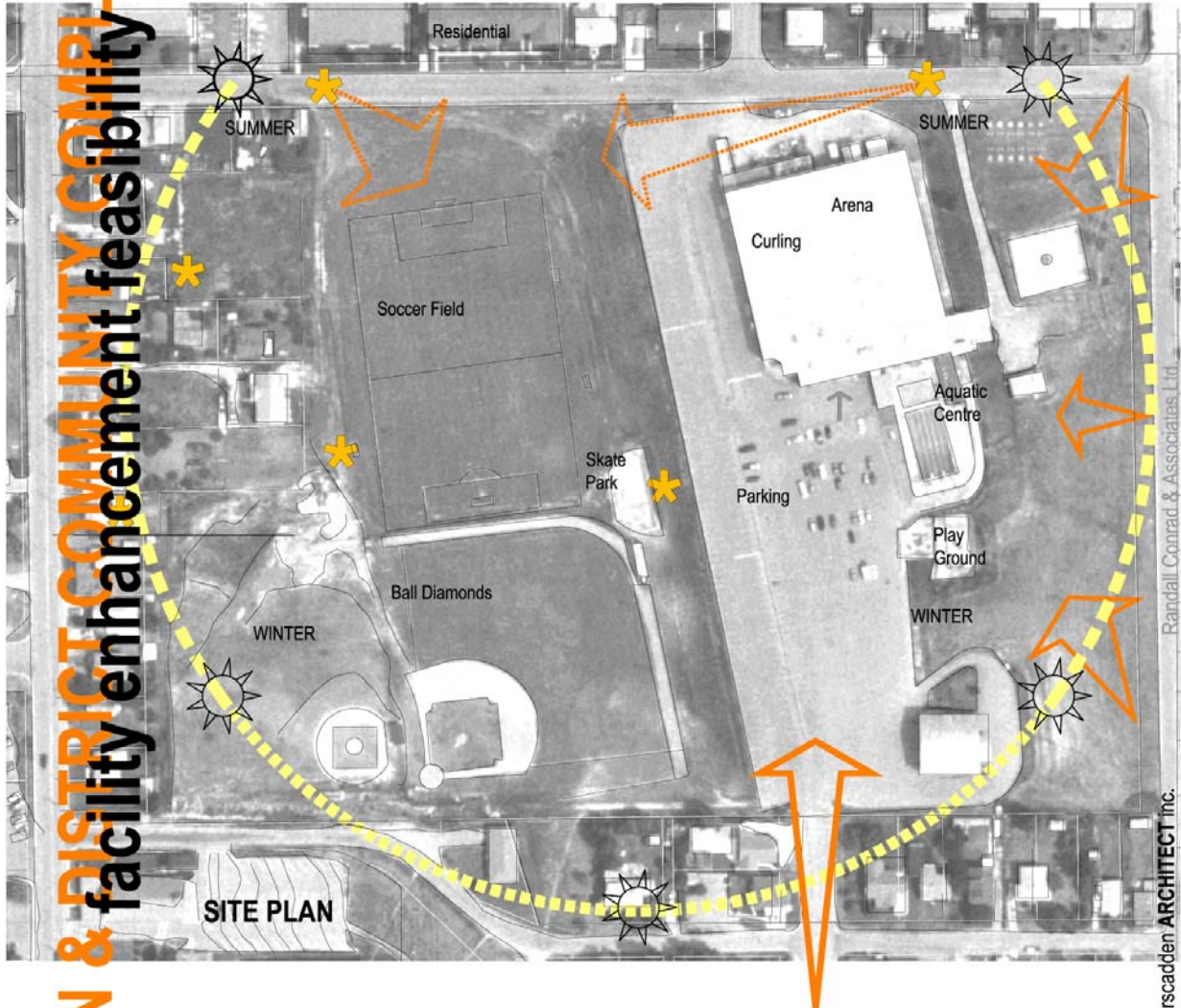
Randall Conrad & Associates Ltd.

bruce carscadden ARCHITECT inc.

20 October 2005

Site Development Concepts

This panel explores the site opportunities and constraints and looks for organizational concepts relative to possible facility expansions.

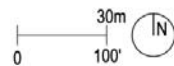


OBSERVATIONS AND OPPORTUNITIES

1. Enhance views to and from the site.
2. Enhance the campus of facilities concept and improve the relationship of the buildings to the park space.
3. Develop landscape to better define park edges and parking areas.
4. Preserve future expansion opportunities for the aquatic centre.
5. Harmonize the roads and service areas in the park.

LEGEND

- Opportunity
- Entrance
- Views



20 October 2005

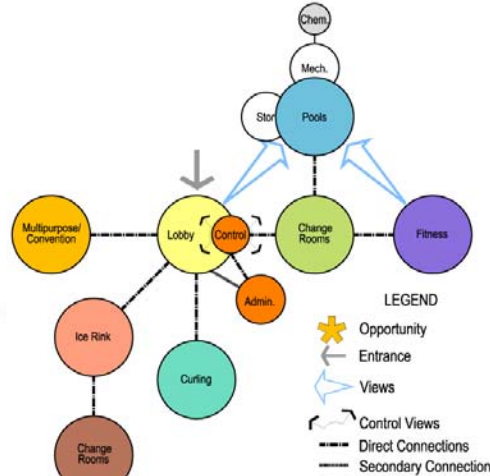
Randall Conrad & Associates Ltd
bruce carscadden ARCHITECT Inc.

The Program

A program is a list of the spaces, areas and technical requirements that inform the design process. The following is a proposed program for the Creston Recreation and Aquatic Centre.

PROPOSED PROGRAM

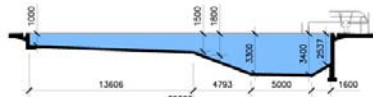
- Aquatic Spaces** 14,000-16,000 sq ft (\$4.6 to 6.7 million)
 - 1. Indoor Pool 10,000-12,000 sq ft
 - 2. Change Rooms 2,500 sq ft
 - 3. Pool Mechanical 1,500 sq ft
- Fitness** 6,000-8,000 sq ft (\$1.7 to 2.6 million)
 - 1. Walking Track
 - 2. Aerobics Studio
 - 3. Cardio Studio
- Child Care** 800-1000 sq ft (\$.3 to .4 million)
- Convention and Meeting Rooms** 8,000-10,000 sq ft (\$2.7 to 3.9 million)
 - 1. Room divisible by three
 - 2. Servery
- Administration Spaces** 1,500-2,000 sq ft (\$.4 million to .8 million)
 - 1. Front Desk, Offices 1,100-1,600 sq ft
 - 2. Guard Room 400 sq ft
- Lobby and Public Spaces** 8,100 sq ft (\$.4 to .5 million)
 - 1. Main Lobby 1,200 sq ft
 - 2. Ice Rink Concession 1,400 sq ft
 - 3. Curling Lobbies & Lounges 5,500 sq ft
- Skate Change Rooms** 4,000 sq ft (\$1.3 to 1.7 million)
 - 1. 5 Change Rooms 3,000 sq ft
 - 2. 1 Change Room 1,000 sq ft (Jr Team)
- Ice Rink**
 - existing to remain 18,800 sq ft
- Curling Rink**
 - existing to remain 15,700 sq ft
- Mechanical and Support Spaces** 4,400 sq ft (1.5 to 1.7 million)



PREFERRED SPATIAL RELATIONSHIPS

POOL DESIGN CONSIDERATIONS

Lap pool options to FINA Standards 2005-2009
(FR2 Swimming Pools)



Lap pool with increased depth (for diving) has higher mechanical costs, but lower bather load and less required fixtures



Lap pool to a maximum depth of 1500mm (5') has lower mechanical costs, but higher bather load and more required fixtures



WATER FEATURES

Many water features have therapeutic value for adults and seniors as well as play value for kids. Some of these popular features include:

1. water arch
2. waterfall
3. lazy river
4. water park
5. hot pool
6. water slide
7. bubble pit
8. tots pool
9. wave action
10. sprinklers
11. steam room
12. sauna

revised to 25 October 05
20 October 2005

Randall Conrad & Associates Ltd.

bruce carscadden ARCHITECT inc.