

# Regional District of Central Kootenay Electoral Area F

## Bonnington Regional Park Purpose and Operations Statement



DRAFT



# TABLE OF CONTENTS

<b>INTRODUCTION AND BACKGROUND.....</b>	<b>4</b>
<b>PARK PURPOSE.....</b>	<b>5</b>
<b>COMMUNITY SIGNIFICANCE .....</b>	<b>8</b>
<b>COMMUNITY SIGNIFICANCE .....</b>	<b>9</b>
<b>COMMUNITY SIGNIFICANCE .....</b>	<b>10</b>
NATURAL FEATURES.....	10
RECREATIONAL FEATURES.....	10
LOCAL & HERITAGE FEATURES.....	10
FIRST NATIONS.....	10
<b>ZONING .....</b>	<b>11</b>
<b>OPERATIONS AND GOVERNANCE.....</b>	<b>12</b>
<b>FACILITIES AND ACTIVITIES.....</b>	<b>13</b>
<b>MANAGEMENT PRIORITIES.....</b>	<b>14</b>
<b>PROJECTED COST ANALYSIS.....</b>	<b>15</b>
<b>CONSULTATION AND FUTURE PLANNING .....</b>	<b>16</b>
<b>APPENDIX 1: REGIONAL PARK ZONING .....</b>	<b>17</b>

## **BONNINGTON REGIONAL PARK PURPOSE AND OPERATIONS STATEMENT**

### **Introduction and Background**

This Purpose and Operations Statement (POS) will guide the management of Bonnington Regional Park into the foreseeable future.

Bonnington regional park is located in the community of Bonnington, 15km south west of the City of Nelson (see Map 1). It is 5.2 ha (12.8 ac) in size and designated a Multiple Purpose park in the Official Regional Parks Plan.

In 2001, a concept plan was developed and the park was created as a community-led initiative. It was supported by both residents and the Area Director at the time, Al Dawson.

Prior to the initial development, the park was envisioned by the local residents of the Bonnington area as a community park, who subsequently formed the Bonnington Regional Park Society to spearhead the project. The society continues to exist today, and supports a newer initiative known as the Bonnington Youth Green Team. The youth team has been active in promoting environmental awareness and other fundraising events among local residents, utilizing the park as a local gathering area. The park lands were formerly owned by the Bonnington Improvement District, and utilized as a gravel pit at the time of the surrounding subdivision development.

Initial funds for park development came from the insurance payout from the 1996 Blewett Ski Hill lodge fire. In August 1999, the RDCK Board formally resolved to transfer the property to the RDCK for regional park purposes. It was anticipated at this time that much of the work to complete the park would be done by volunteers. After countless volunteer hours, donations, fundraising events, and media releases, the park was complete. In April 2007, RDCK received a bike park proposal as an extension to the day-use area, which was subsequently developed.

Currently the park sees a moderate amount of year-round use, mostly by local residents. The bike park and ball field see occasional use.

This POS provides the direction for the priority management and development for Bonnington Regional Park. Implementation of this POS is of an operational nature, with follow-through on an as-needed basis and dependent on the availability of financial and staffing capacity.

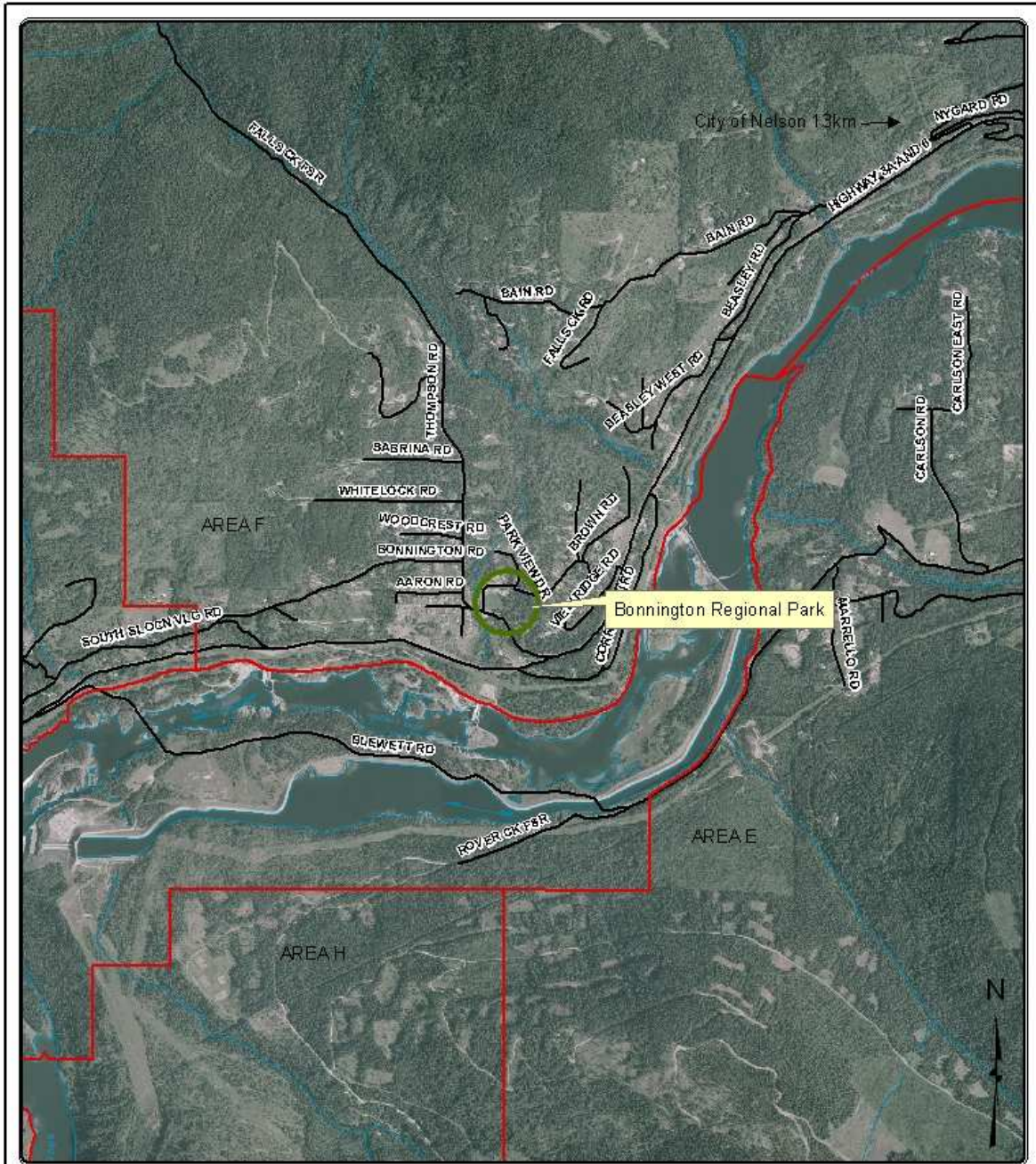
### **Bonnington Regional Park Society**

BRPS is a provincially registered charitable organization, formed in 2001 to establish a community park in the Bonnington area. The Society is not appointed by the RDCK Board, however the Area F Director, Al Dawson, was instrumental in supporting the endeavour. The Society organized a number of volunteer work groups and raised funds needed to establish the park.

## **Park Purpose**

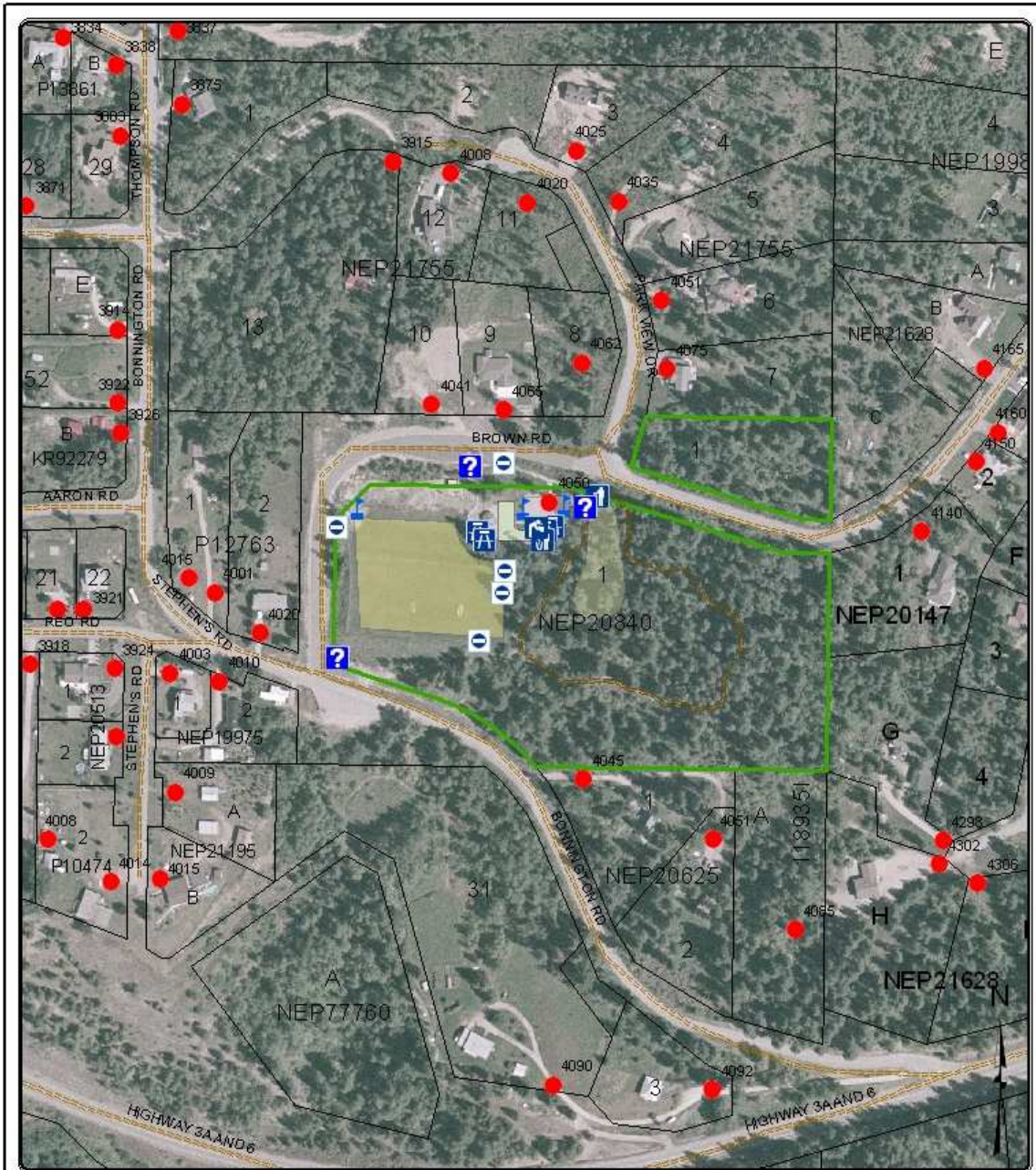
Bonnington Regional Park was established to serve as a day use recreation area for local residents and tourists alike. Facilities include a bike park, basketball court, playground, picnic gazebo, washrooms, regulation size soccer and baseball fields, and walking trails.

Map 1: Park Location



 <p>Box 590, 202 Lakeside Drive, Nelson, BC V1L 5R4                  Phone: (250) 352-6665 Toll-Free 1-800-258-7325 (BC)                  Fax: (250) 352-9300 Info: www.rdkc.ko.ca</p> <p>The mapping information shown are approximate representations and should only be used for reference purposes. The Regional District of Central Kootenay is not responsible for any errors or omissions on this map.</p>	<p style="text-align: center;">Bonnington Regional Park</p> <p><b>Legend</b></p> <ul style="list-style-type: none"> <li><span style="border: 1px solid red; display: inline-block; width: 15px; height: 10px; margin-right: 5px;"></span> Administrative Boundary</li> <li><span style="border-bottom: 1px solid black; display: inline-block; width: 15px; margin-right: 5px;"></span> Roads - REQ</li> <li><span style="border-bottom: 1px solid blue; display: inline-block; width: 15px; margin-right: 5px;"></span> Creeks</li> </ul>	<p><b>Map Scale:</b></p>  <p>Map Projection: UTM Zone 11      Map Datum: NAD83                  Date Printed: 2011-10</p> <p><b>Mapsheet: 82F043.1.2</b></p>
--	--	---

Map 2 Park Map



 <p>Box 590, 202 Lakeside Drive, Nelson, BC V1L 5R4                  Phone: (250) 352-6665 Toll-Free 1-800-298-7325 (6C)                  Fax: (250) 352-9300 Internet: www.rdkc.bc.ca</p> <p>The mapping information shown are approximate representations and should only be used for reference purposes. The Regional District of Central Kootenay is not responsible for any errors or omissions on this map.</p>	<table border="0"> <tr> <td></td> <td>BMX park</td> <td></td> <td>Bench or Picnic table</td> </tr> <tr> <td></td> <td>Park boundary</td> <td></td> <td>Fountain</td> </tr> <tr> <td></td> <td>Playing area</td> <td></td> <td>Garbage bin</td> </tr> <tr> <td></td> <td>Playing field</td> <td></td> <td>Gate</td> </tr> <tr> <td></td> <td>Sheltered picnic area</td> <td></td> <td>Signage</td> </tr> <tr> <td></td> <td>Basketball Court</td> <td></td> <td>Sports apparatus</td> </tr> <tr> <td></td> <td>Toilets</td> <td></td> <td>Multise trail</td> </tr> <tr> <td></td> <td>Park Boundary</td> <td></td> <td></td> </tr> </table>		BMX park		Bench or Picnic table		Park boundary		Fountain		Playing area		Garbage bin		Playing field		Gate		Sheltered picnic area		Signage		Basketball Court		Sports apparatus		Toilets		Multise trail		Park Boundary			<p><b>Map Scale:</b></p>  <p>Map Projection: UTM Zone 11    Map Datum: NAD83                  Date Printed: 2006</p> <p><b>Bonnington Regional Park</b></p>
	BMX park		Bench or Picnic table																															
	Park boundary		Fountain																															
	Playing area		Garbage bin																															
	Playing field		Gate																															
	Sheltered picnic area		Signage																															
	Basketball Court		Sports apparatus																															
	Toilets		Multise trail																															
	Park Boundary																																	

Bonnington Regional Park Photos





View looking toward community of Bonnington



## Community Significance

### Natural Features

- The park includes approximately 5 acres of developed park land (playground, playing field, bike park, etc.), and approximately 7.5 acres of undeveloped park land, in its natural state (see Map 3).

### Recreational Features

- Popular day-use location, primarily for local and regional residents. Use has remained consistent since the time of its creation.
- Public recreational infrastructure includes a bike park, playground, playing field, sheltered picnic area, basketball court, toilets, picnic tables, fountain, garbage bin, signage, a service road, and walking trails. Majority of public use occurs in the summer months.
- No major facility upgrades are projected in the near future
- The Nelson, Salmo, and Electoral Areas E, F, & G Regional Parks is responsible for managing the park and all park facilities, including maintaining park grounds and structures, and identifying any potential public hazards. Park maintenance is the responsibility of the park contractor.

### Local & Heritage Features

- No known local or heritage features

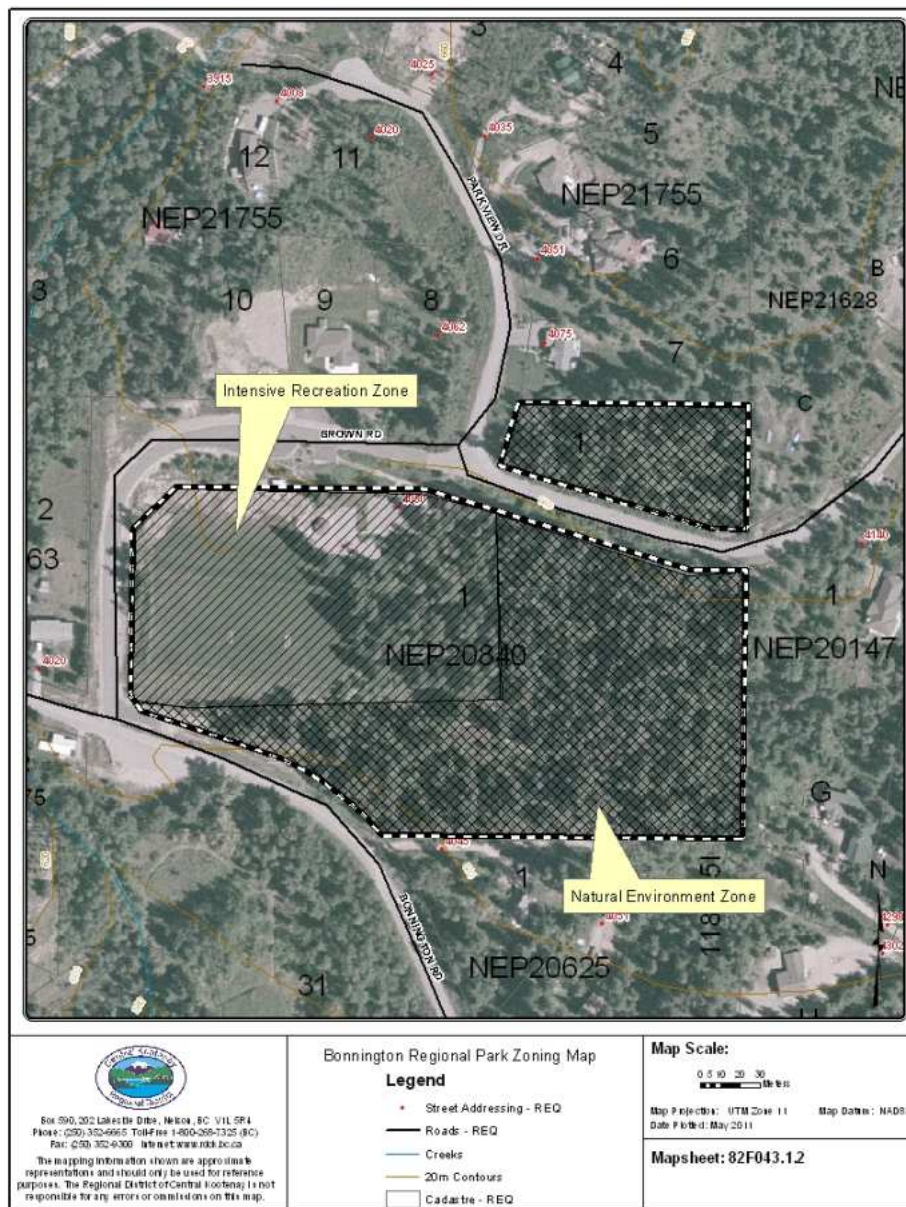
### First Nations

The park is within the asserted traditional First Nation territories of the Lower Kootenay Band, Ktunaxa Nation Council, and Okanagan Nation Alliance.

## Zoning

This POS uses zoning to assist in the planning and management of the park (see Map 3). The playground, soccer/ball field, and bike park areas of the park are zoned Intensive Recreation, with the objective of providing infrastructure to accommodate recreational day use activities. This area provides intensive infrastructure for park users. The remainder of the park is zoned Natural Environment with the intent to foster natural processes, with minimal facility development, for the enjoyment of the public. This area will continue to be used as an extension to the park for walking and nature appreciation. Appendix 1 describes the RDCK Regional Parks zoning framework.

Map 3: Zoning

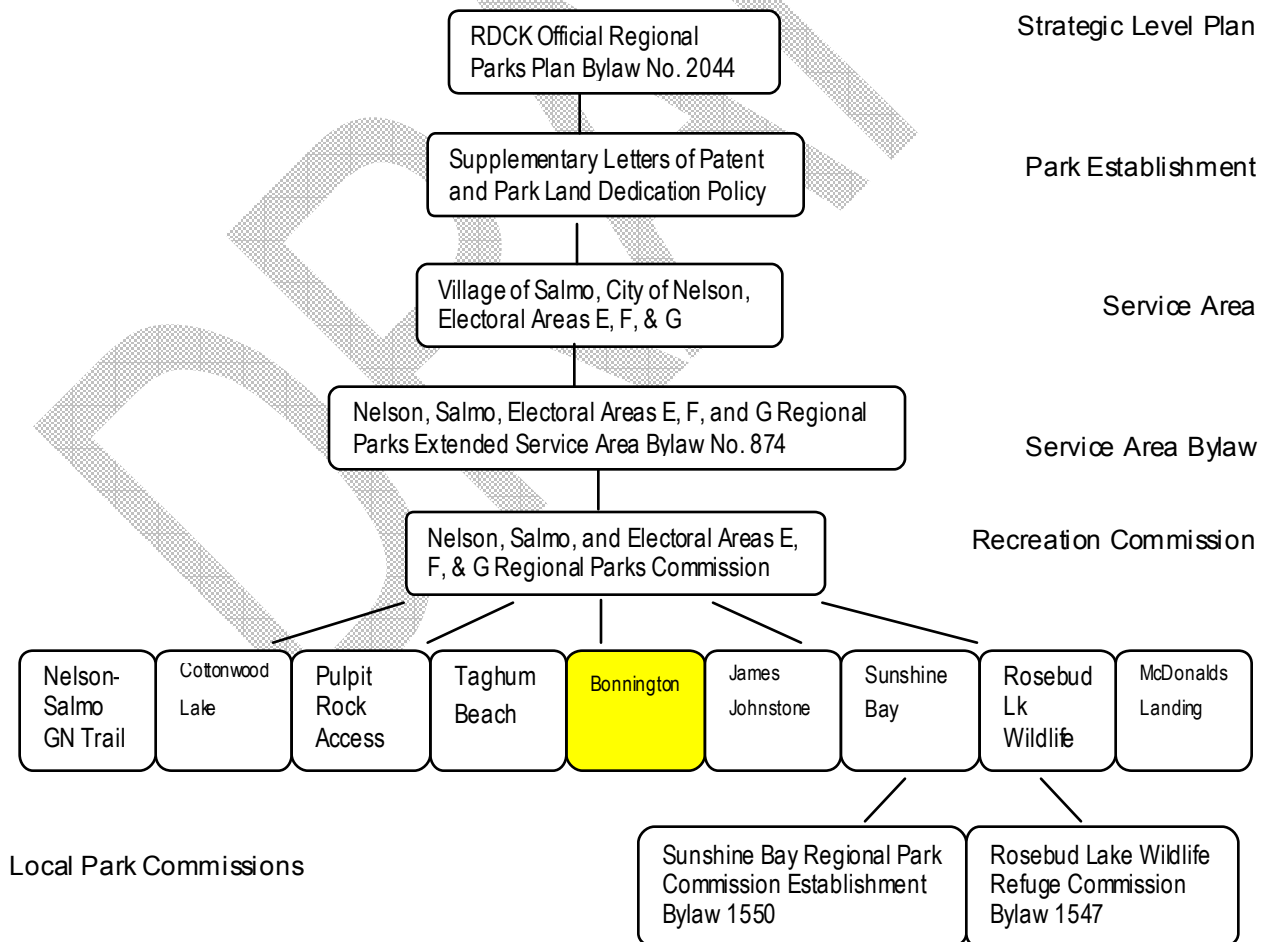


## Operations and Governance

Park operations is an important component in ensuring that the daily experience of park users is enjoyable and safe. Park operations responsibilities include seeing that park regulations are understood and enforced, facilities are maintained and repaired when required, and the day use areas kept clean and accessible. Park management is undertaken jointly by RDCK staff and Nelson, Salmo, and Electoral Areas E, F, & G Regional Parks Commission, with input from the Bonnington Regional Parks Society. The Regional Parks Commission makes recommendations to the RDCK Board. The RDCK Board is the decision making authority for the park budget, policy, and regulations.

The RDCK currently operates and maintains Bonnington Park through a maintenance contractor. The work will be carried out by the contractor according to specifications in the contract, and the contractor must supply all equipment necessary to perform the duties and meet the required standards of service.

Figure 1: Bonnington Regional Park Governance Structure



## Facilities and Activities

RDCK Regional Park rules and regulations are stated in the RDCK Regional Park Regulation Bylaw No. 2173.

ACTIVITY	Zone		Comments
	Intensive Recreation	Natural Environment	
Camping	N	N	
Day-Use	Y	Y	
Dogs	Y	Y	Under control only
Horses	N	N	
Motorized Use	Y	N	On existing roads only
Swimming	n/a	n/a	
Fishing	n/a	n/a	
Boating	n/a	n/a	
Fire Mgmt	Y	Y	
Grazing	N	N	
Hunting	N	N	
Noxious Weed Control	Y	Y	
Bicycles	Y	Y	
Skiing	Y	Y	
<b>FACILITY</b>			
Administrative Buildings and Compounds	Y	N	
Boat Launch	n/a	n/a	
Roads & Parking Lots	Y	N	
Trails	Y	Y	
Playground	Y	N	
Day-Use Facilities	Y	N	
Toilets	Y	N	
Picnic Shelter	Y	N	
Fire Pits	Y	N	

## Management Priorities

This section outlines the immediate park priorities that are to be undertaken over the next five to ten years. It is understood that project proposals may come forward which are not anticipated, based on immediate management issues. These projects may be considered on a case by case basis by the General Manager of Community Services, General Manager of Development Services, the Nelson, Salmo, and Electoral Areas E, F, & G Regional Parks Commission, and the RDCK Board.

The RDCK will be responsible for funding capital works at the park, and intends to prioritize projects listed below. The ability to do any of the projects presented is contingent on revenue and the resources available.

Management priorities include the following:

- Primary management interest is to ensure public safety by identifying potential hazardous features and areas that may pose a liability risk to the RDCK (e.g. illegal structures, illegal activities, hazard trees)
- Enforcing park rules and regulations, pursuant to RDCK Park Regulation Bylaw 2173
- Maintaining park infrastructure
- Fostering both public and commercial activities compatible with park values
- Managing commercial activities through a Park Use Permit process
- Gathering an inventory of natural species, and any potential impacts to those species and the adjacent riparian areas
- Protecting and maintaining key park natural and recreational values (e.g. sensitive natural features/areas, sensitive archaeological areas, focusing development away from sensitive features)

## Projected Cost Analysis

Bonnington Regional Park possesses a varying amount of development necessary for safe and satisfactory visitor experiences. Currently the park requires regular maintenance, including lawn cutting & watering, garbage pick-up, and on-going facility repair. Depending on immediate management priorities and assessment of risk to RDCK, development costs could range from \$0-30,000.

As expected, Bonnington Park has seen regular local use since 2001. Local volunteers and the RDCK park maintenance contractor have slowly built additional and maintained park infrastructure to meet local demand. It is anticipated that there will continue to be on-going maintenance and development costs associated with the regular usage of this park.

Bonnington Regional Park costs should be prioritized at 1) ensuring public safety, 2) maintaining park infrastructure, and 3) enhancing the user experience. Operating costs will include infrastructure maintenance, road and trail maintenance, hazard tree removal, and identification and mitigation of any public safety hazards. A range of \$9,000 to \$10,000 can be expected for yearly facility operations, excluding improvement, major project, and professional (e.g. tree faller, biologist, contractor etc.) costs. Future development costs for Bonnington will vary depending on the types of facilities and/or projects desired by local residents.

Tax revenues are the current source of base funding for regional parks. Other sources may be used at some point to enhance facilities or services for specific purposes (e.g. day use fees, donations, corporate sponsorship). These sources would have to be studied and recommended by the Nelson, Salmo, and Electoral Areas E, F, & G Regional Parks Commission and be approved by the RDCK Regional Board on a case by case basis.

### Maintenance Costs

	Period	Projected Cost (\$)
Contractor (mowing, toilets, garbage pick-up, minor repairs, etc.)	Yearly	7-8,000
Garbage to dump	Yearly	200-500
Supplies	Yearly	0-1,000
Hazard Tree removal	Yearly	0-3,000
Facility repair contingency	Yearly	0-1,000

### Operations & Development Costs

	Period	Projected Cost (\$)
Contractor	Yearly	Contractor time (see Maintenance Costs)
Projects (signage, additional day use facilities, tree planting/thinning)	Yearly, based on resources available	0-30,000

### Administration Costs

	Period	Projected Cost (\$)
Office support	Yearly	Staff time=250-500

Planning	Yearly	Staff time=500-2000
Supplies	Yearly	100

**Other Costs**

	Period	Projected Cost (\$)
Ecological Assessment/Inventory Overview	Once, incomplete	Staff time=250-500
Noxious Weed Inventory Overview	Once, incomplete	Staff time=250-500

**Consultation and Future Planning**

The RDCK Community Services Department and Development Services Department is jointly accountable for the planning, administration, and management of the park through the application of regulations and policies.

Revisions or updating of this POS will be coordinated by RDCK, with involvement of other agencies, including but not limited to the Provincial and Federal Governments, Bonnington Regional Park Society, Nelson, Salmo, and Electoral Areas E, F, & G Regional Parks Commission, First Nations, commercial interests, and other stakeholders as required.

This POS may initiate a detailed management planning process that involves more specific management direction, detailing park attributes, inventory of natural, cultural and recreational features, identifying and detailing land uses and interests, tourism management, and its function in a larger Regional Parks system. This process would involve broad public input, along with other agencies, First Nations and stakeholders.

## Appendix 1: Regional Park Zoning

	<b>Intensive Recreation</b>	<b>Limited Recreation</b>	<b>Special Feature</b>	<b>Natural Environment</b>
<b>Objective</b>	Provide for a variety of accessible, facility oriented outdoor recreation opportunities	Protect scenic values and to provide for recreation opportunities in a largely undisturbed natural environment	Protect and present significant natural or cultural resources, features or processes because of their special character, fragility, and heritage values	Protect undisturbed natural environment, providing limited recreation opportunities
<b>Use Level</b>	Relatively high density and long duration types of use	Relatively low use, but higher levels associated with nodes of activity or access	Generally low	Very low use to provide for solitary experiences and protect natural features. Uses may be limited and/or controlled
<b>Access</b>	All weather public roads or other types of access where use levels are high	Motorized and non-motorized	Variable, may require special permission	Non-motorized
<b>Location</b>	Contiguous with all weather roads and covering immediate areas, modified landscapes or other high-use areas	Removed from all-weather roads, but easily accessible on a day-use basis	Determined by location of special resources. May be surrounded by or next to any other zone	Removed from easy access
<b>Boundary Definition</b>	Includes areas of high facility development in concentrated areas	Boundaries consider limits of activity and facility areas relative to ecosystem characteristics and features	Area defined by biophysical characteristics or the nature and extent of special resources	Defined by ecosystem limits and geographic features
<b>Recreation Opportunities</b>	Full spectrum of outdoor recreation activities	Limited due to access constraints	Limited to protect special resources	Non-motorized only
<b>Facilities</b>	May be intensely developed for user convenience, e.g. campgrounds, boat launches, parking lots, etc.	Moderately developed for user convenience, e.g. walk-in campsites, docks, small accessory buildings	Interpretive facilities only	Minimal or no facility development
<b>Impacts on Natural Environment</b>	Includes natural resource features in a primarily natural state, but where human presence may be readily visible. Includes areas of high facility development with significant impact on concentrated areas	Area where human presence is not normally visible. Facility development limited to relatively small areas. Facilities visually compatible with natural setting.	None	Natural area with little evidence of human presence. Facilities visually compatible with natural setting.
<b>Management Guidelines</b>	Oriented to maintaining a high quality recreation experience.	Oriented to maintaining a natural environment and high quality recreation experience.	High level of management protection with on-going monitoring. Oriented to maintaining special resources.	Oriented to protecting the natural environment. Managed to ensure low visitor use levels.
<b>Examples of Zoning</b>	Taghum Beach, Robson Wharf, Bonnington, Pass Creek	Rosebud Lake, Winlaw Nature Park, Roseberry Parklands	Historic Answorth Wharf, Brilliant Bridge, Sandon	Portion of Sunshine Bay